

---

# **THE GIANT-VAC 'SWING-AWAY-HITCH MOUNT' TRUCK LOADER**

**MODELS 8BIPHM--11BIPHM--16KHM--16BVGHM**

---

## **ASSEMBLY INSTRUCTIONS AND OPERATOR'S MANUAL**

---

### ***Congratulations!***

You have just purchased one of the finest pieces of outdoor power equipment on the market today. If properly cared for, your Giant-Vac Hitch-Mount Truck Loader will provide years of dependable service. Please read and follow this instruction manual carefully in order to get the most out of your new equipment.

As you unpack your Giant-Vac truck loader, you will find the following:

- 1- Carton containing power unit with impeller
- 1- Carton containing hitch/swing arm assembly, complete intake and discharge assemblies, hardware kit and manuals

Inspect parts for any damage that may have occurred in shipping. If any are found, save the packing boxes and **IMMEDIATELY** notify the transport carrier who delivered your machine, as they are responsible for the damage and are the only ones to make any adjustments.

Before leaving our plant, all parts are inspected to ensure proper fit, thus, you will have little difficulty in assembling your Giant-Vac if you follow these steps.

---

### **CALIFORNIA PROPOSITION 65 WARNING**

**Gasoline and Diesel engine exhaust and some of its constituents are known to the State of California to cause cancer, birth defects and other reproductive harm.**

**As an owner of off-road gasoline or diesel engine equipment and/or as an employer, you also may have an obligation under the California Occupational Safety and Health Act or under Proposition 65 to warn persons exposed to gas and diesel engine exhaust and/or other Proposition 65 chemicals in and around your workplace. See California Health and Safety Code section 25249.5, Title 22 of the California Code of Regulations at Section 1200 *et seq.*, and Title 8 of the California Code of Regulations Section 5194.**

1. Insert Hitch/Swing arm assembly into pickup truck hitch receiver and secure with pin and hairpin cotter (not supplied).
2. Install power unit on hitch mount assembly with impeller to the rear and secure with four (4) 1/2" x 1-1/4" hex head bolts (Parts List Ref. # 42), flat washers (#29), lock washers (#25) and nuts (#24).
3. Install Intake flange (#4) to power unit with 5/16" x 3/4" bolts and lockwashers (#5). Flip up Intake flange safety cover (#8; this should already be installed onto the intake flange by the factory) and install quick-attach hose adapter (#11) to intake flange. **Important: Be sure to lock hose adapter into intake flange by pushing adapter into flange as far as it will go, then twisting into locking slots. Also, be sure that the safety switch pressure tab on the hose adapter makes positive contact with switch, pushing button into switch body. Otherwise, unit will not operate. DO NOT ATTEMPT TO DEFEAT THIS SAFETY DEVICE. DOING SO MAY RESULT IN SERIOUS INJURY OR DEATH.** Secure adapter by installing 5/16" fender washer (#12) and 5/16" plastic knob nut (#13) onto each adapter stud. Install 5/16" locknut (#14) onto each stud, tightening snugly against knob nut to prevent loosening and/or loss of knob nut, and subsequent disconnection of hose adapter.
4. Attach intake hose (#16) to hose adapter using one hose clamp (#15). Assemble hose support band (#17) around intake hose approximately 3½ feet from free end of hose using 5/16" hex head bolt (#18) with two nuts (#19) locked together. Now attach intake nozzle (#20) to loose end of intake hose using the remaining hose clamp.
5. Install discharge stack (#27) on top of blower housing outlet and fasten with two (2) 1/2" x 4-1/2" hex bolts (#28)\*, four (4) flat washers (#29), lockwashers (#25) and nuts (#24). **Note: Make certain boom support bracket on discharge stack (flat piece with hole in center extending from side of discharge stack) is aligned above boom support pin on top of blower housing.**  
\*At this point, install turnbuckle (#33) onto unit by first sliding 1/2" x 4-1/2" bolt with one flatwasher down through hole in the discharge stack mounting bracket located under boom support bracket. Slide eye end of turnbuckle onto bolt, then slide bolt down through mounting bracket on power unit, securing with second flatwasher, lockwasher, and nut.
6. Install discharge elbow (#30) on top of stack \* using two 1/2" x 4-1/2" hex bolts (#28), four flat washers (#29), two lockwashers (#25) and nuts (#24) as described in previous step. Attach flexible metal discharge hose (#32) to discharge elbow using squeeze ring (#31), taking care to tighten squeeze bolts evenly and securely. Insert metal hose through debris box door. (Information concerning debris box contained further along in this manual.) **\* BE SURE THAT ELBOW IS ATTACHED TO STACK AS TO DIRECT DISCHARGE INTO THE BED OF THE TRANSPORT VEHICLE.**
7. Assemble upper and lower boom supports (#22, 23) using two (2) 1/2" x 1" bolts (#26), lockwashers (#25) and nuts (#24). Slide round portion of lower boom through hole in boom support bracket and over pin on top of blower housing. Attach boom chain (#21) to hole in

upper boom support using S-hook on end of chain. Feed other end of boom chain through eye in top of hose support band and attach S-hook to link in upper section of chain. Adjust to support nozzle approximately 12" above ground level.

#### FOR TRANSPORT:

1. Connect safety chain on swing arm to vehicle (there should be a hookup on the vehicle hitch for this) to prevent unit from swinging to open position during transport.
2. Extend turnbuckle on power unit (Step 5 of assembly instructions) by turning out either end as far as possible. Fasten S-hook end of upper body support chain (#34) to a good, strong point on the vehicle (installing a heavy duty eyebolt onto the debris box would be ideal). Fasten chain to hook end of turnbuckle, taking up as much slack as possible to keep the chain taut. Tighten further by taking in turnbuckle (This is done by rotating center portion of turnbuckle in appropriate direction) until chain is as tight as possible.
3. Remove boom chain and swivel boom to side of truck bed and secure with a rope or hardware. It is recommended disconnecting intake hose assembly from power unit via hose adapter, and fastening hose assembly to debris box with two or three transport mounting brackets (not included). Or place intake hose over engine frame and secure with bungee cord or similar tie down to hold hose and nozzle during transport.
4. (Optional Long Swing Arm Only) Fasten hook end of Secondary safety turnbuckle (#45) to vehicle (See notes on fastening to vehicle in Step 2). Hook one end of Secondary safety chain (#46) to eyebolt end of turnbuckle. Feed other end of chain through eye on end of swing arm. Pull taut, then fasten S-hook to upper section of chain. Tighten securely by taking in turnbuckle.

#### **WHEN TRANSPORTING THE TRUCK LOADER, DO NOT EXCEED 30 M.P.H. HIGH SPEED DRIVING AND POOR ROAD CONDITIONS CAN CAUSE DAMAGE TO THE TRUCK LOADER AND THE PICK UP TRUCK.**

**DEBRIS BOXES: IMPORTANT:** The Giant-Vac Hitch Mount Truck Loader is designed to be used in conjunction with a truck that has a leaf receiver box installed. **NEVER** run or operate your Giant-Vac Truck Loader unless it is completely connected to a receiver box and the discharge hose is installed. Following are a few suggestions for constructing a leaf debris box. To begin with, it is extremely important to have an adequate screen for allowing air to escape. We strongly recommend the entire top of the box be covered with screening. Flattened ¼" expanded metal mesh or ¼" square wire makes an excellent screen. The debris box is generally fabricated out of plywood and angle iron. A 3" angle iron frame is first fabricated. Then the sides are lined with ¾" thick exterior type plywood. A frame is made for the top and then covered with metal screening. A door should be fabricated from angle iron and plywood with a hinge on top. Do NOT use any thinner plywood as the internal pressure is apt to blow the sides out. A hole slightly larger than the discharge hose diameter (approx 7-1/2 - 8") should be cut in the rear door so that the leaf loader can discharge debris into the box. Make sure that this is a tight fit. Also, a rubber gasket (not supplied) should be placed around this hole. This will also help keep debris from the engine air intake of the truck loader.

**NEVER INSERT ANY BODY PART OR OTHER FOREIGN OBJECT IN ANY OPENING WHILE THE MACHINE IS RUNNING.**

MOTOR INSTRUCTIONS: You have received a complete engine manual with your machine. Be sure to especially note the instructions on OILING. ALL MACHINES ARE SHIPPED WITHOUT OIL OR GASOLINE UNLESS OTHERWISE NOTED. If you have any difficulties with the engine, check the Yellow Pages of your phone book for the engine dealer nearest you, rather than us, as the engines are under their own manufacturer's warranty.

---

## 2

## SAFETY AND OPERATING INSTRUCTIONS

---

### TRAINING:

1. Regard your Giant-Vac as a piece of power equipment and teach this regard to all who will operate this unit.
2. Never allow children or young teenagers to operate the Giant-Vac.
3. Be sure you know how to stop the engine at a **MOMENT'S NOTICE**.
4. Instruct children to keep away from the area of operation at all times.

### PREPARATION:

1. Before starting operation, clear the entire work area of all debris that could catch on or be thrown by the Truck Loader.
2. Unless there is very good artificial light, use only during daylight.
3. Fill gasoline driven machines outdoors. Avoid spilling gasoline and DO NOT fill the engine while it is running or while you are smoking.
4. Be certain the intake hose boom is properly adjusted according to the instructions found in an earlier section of this manual.

### OPERATION:

1. **Never insert any body part or other foreign object in any opening while the machine is running.**
2. **CAUTION: When transporting the truck loader, do NOT exceed 30 M.P.H. High speed driving and poor road conditions can cause damage to the truck loader and the tow vehicle. Make sure the hose and boom are secured before towing your truck loader.**

3. Do not operate with guards or component parts removed from unit.
4. Before making any adjustments or repairs, stop engine and remove spark plug wire.
5. While in operation, keep all parts of body away from intake and discharge sections.
6. When operating machine, keep people and pets a safe distance away.
7. Before starting, be certain to check the engine's OIL AND GASOLINE. (See engine manufacturer's Service Manual). **NEVER** check the engine while engine is running or while you are smoking. Check **only** when engine is cold.
8. **NOTE: Before starting engine, be certain unit is completely assembled.**  
**8 & 11 HP UNITS:** Make sure red switch on engine casing is switched to 'on' position. Slide throttle control to the uppermost position. When engine is cold, you may have to initially choke engine. (The choke lever is located above throttle control.) Pull recoil rope slowly until you feel compression, then pull fast and steady. Do not let recoil rope snap back by itself. This may damage the rope or recoil assembly. After engine starts, move throttle lever down to about halfway.  
**16 HP UNITS:** Put acid in the battery and make sure the battery is charged. Attach both battery cables. Slide throttle control to the uppermost position. When engine is cold, you may have to initially choke engine. (The choke lever is located above throttle control.) Next, turn key past 'run' position to 'start'. After the engine starts, release key (it will automatically spring back to 'run' position), and move throttle lever down to approximately halfway.
9. After the machine is running, check the adjustment of the chain on the hose support. This is vitally important for ease of operation. To make this check, speed up the engine. You should then be able to push the nozzle to the ground and pull it back up by using three fingers of one hand. If you can not operate the nozzle accordingly, the chain should be readjusted. In operation, you will note the boom will readily swing over a 8 foot path.
10. We recommend the following for efficient use of the Truck Loader. If the leaves are dry, run the machine at approximately half throttle. This will help reduce the amount of small particles of debris escaping through the exhaust screen. When the leaves are wet or partially frozen, run the machine at full throttle. If the pile of leaves is high, a short back and forth sweeping motion will effectively eat into the pile of leaves. If the leaves are wet, it is best to move into the pile with a gulping motion. In this way, you will pick up a quantity and then move the hose slightly away from the pile to allow the leaves to rapidly flush through.
11. Never use your Giant-Vac Truck Loader to pick up sand or stones. Debris like this is very abrasive and can damage the impeller and blower housing.
12. The Truck Loader is designed to be used in conjunction with a truck that has a receiver box installed. Be sure the receiver box is of adequate construction to withstand the high velocity

and force of the incoming debris. **NEVER** run or operate your Truck Loader unless it is completely connected to a receiver box and the intake hose is installed.

13. **NEVER** allow a person to ride, sit or stand on the Truck Loader. **NEVER** allow a person to ride, sit or stand on the towing vehicle other than in the driver's cab of the towing vehicle.

14. Make sure that the driver of the towing vehicle has the operator of the Truck Loader in full view at all times. Also, when operating the Truck Loader, instruct the operator to stay to the side of the machine, **never** in front or behind.

#### MAINTENANCE AND STORAGE:

1. Follow implicitly the engine manufacturer's recommendations for maintenance and storage.

2. Never adjust the Truck Loader or change attachments until the engine has been turned off and the spark plug wire has been disconnected.

3. If carburetor adjustment is necessary, stand to one side and keep feet and hands in the clear while making adjustments.

4. Keep engine free from accumulations of grass, leaves or excessive grease. An accumulation of these combustible materials may result in a fire.

5. Store gasoline in a safe and approved container in a cool dry place.

6. Keep the Truck Loader and fuel container in locked storage to prevent children from playing and/or tampering with them.

7. Gasoline powered equipment or fuel containers should not be stored in a basement or any closed area where heating or heat appliances or open pilot lights are present, unless the fuel is completely drained from the power equipment and the fuel containers.

## GIANT-VAC WARRANTY

GIANT-VAC, INC., here-in-after called Giant-Vac, warrants each new Giant-Vac to the original retail purchaser of the new Giant-Vac equipment to be free from manufacturing defects in normal service for a period of one (1) year. This warranty does not apply to engines, tires or other parts that are purchased and warranted by their manufacturer. Items such as hoses and blades are not warranted, as these are considered expendable items. This warranty does not include equipment failures due to normal wear.

Any obligation under this warranty is expressly limited to the replacement or repair, at an authorized servicing Giant-Vac dealer, or at a point designated by us, of such parts as appear to us to have been defective. All defective parts have to be returned freight prepaid before credit will be issued.

We shall not be liable for transportation charges in connection with the replacement or repair of defective parts.

This warranty does not apply to a Giant-Vac upon which repairs or alterations have been made by others except with our prior written approval.

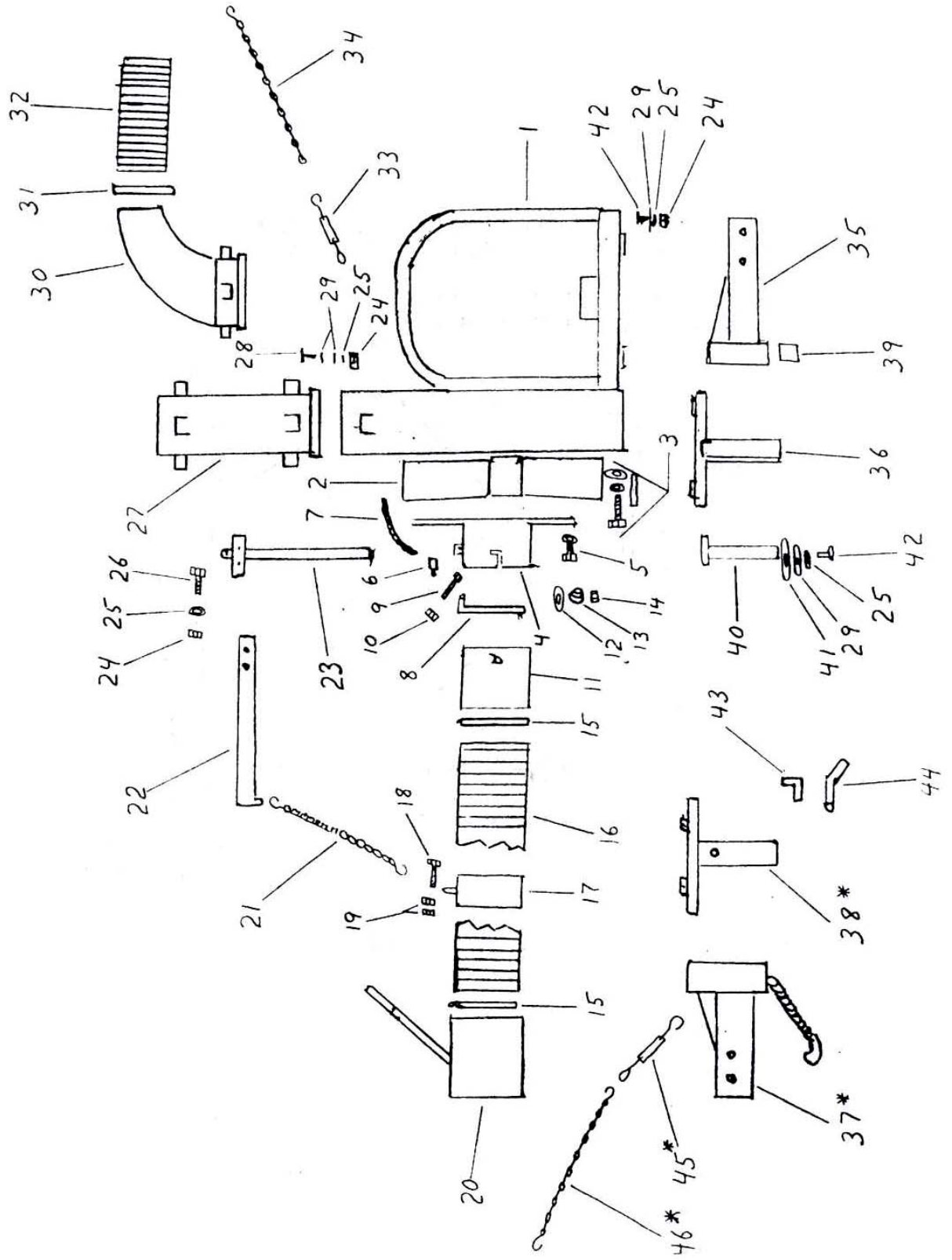
We shall not be liable for consequential damages or contingent liabilities for the fitness of any Giant-Vac for any particular purpose.

We make no other express, implied or statutory warranty, nor is anyone authorized to make any in our behalf.

---

Giant-Vac, Inc.  
P.O. Box 195  
South Windham, CT. 06266  
Phone: 860-423-7741 Fax: 860-423-2654

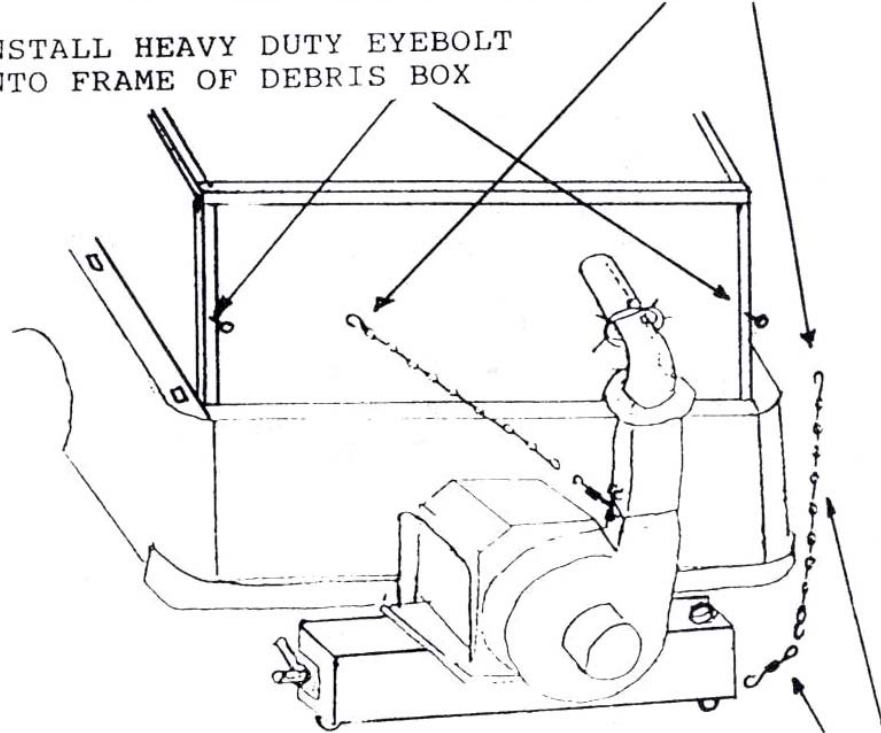
PARTS LIST # 5785 Rev A





CONNECT TO EYEBOLT ON FRAME  
OR OTHER SECURE PART OF VEHICLE

INSTALL HEAVY DUTY EYEBOLT  
ONTO FRAME OF DEBRIS BOX



OPTIONAL LONG  
SWING ARM ONLY

INSTALLATION OF TRANSPORT SUPPORT  
CHAINS ONTO TRANSPORT VEHICLE

**PARTS LIST # 5785**

<b>REF NO.</b>	<b>PART NO.</b>	<b>DESCRIPTION</b>	<b>8BIPH M</b>	<b>11BIPHM</b>	<b>16KHM</b>	<b>16BVGHM</b>
1	10148	Motor base & housing	1	--	--	--
1	10149	Motor base & housing	--	1	--	--
1	10150	Motor base & housing	--	--	1	1
2	21543	Impeller	1	--	--	--
2	21533	Impeller	--	1	--	--
2	21523	Impeller	--	--	1	1
3	31020	7/16-20 x 2 impeller bolt, washers & key	1	1	1	1
4	20199	Intake flange - 8"	1	--	--	--
4	20200	Intake flange - 8"	--	1	--	--
4	20201	Intake flange - 10"	--	--	1	1
5	31487	5/16 x 3/4 hex bolt & lock washer	4	4	8	8
6	31480	Safety cutoff switch	1	1	1	1
6A	31100	3/16 pop rivet	2	2	2	2
7	31628	Safety switch wiring harness	1	1	--	--
7	31629	Safety switch wiring harness	--	--	1	--
7	31817	Safety switch wiring harness	--	--	--	1
8	20202	Intake flange safety cover - 8"	1	1	--	--
8	20203	Intake flange safety cover - 10"	--	--	1	1
9	31461	1/2 x 2-1/2 hex bolt	1	1	1	1
10	31406	1/2 lock nut	1	1	1	1
11	20204	Quick-release hose adaptor - 8"	1	1	--	--
11	20205	Quick-release hose adaptor - 10"	--	--	1	1
12	31578	5/16 fender washer	2	2	2	2
13	31626	5/16 plastic knob nut	2	2	2	2
14	31436	5/16 lock nut	2	2	2	2
15	34015	8" hose clamp	2	2	2	2
15	34016	10" hose clamp	2	2	2	2
16	34006	8" x 10" intake hose	1	1	--	--
16	34007	10" x 10" intake hose	--	--	1	1
17	40120	8" support band	1	1	--	--
17	40109	10" support band	--	--	1	1
18	31623	5/16 x 2-1/2" hex bolt	1	1	--	--
18	31141	5/16 x 3-1/2" hex bolt			1	1
19	31004	5/16 nut	2	2	2	2
20	20149	Intake nozzle - 8"	1	1	--	--
20	20150	Intake nozzle - 10"	--	--	1	1
21	31140	Boom chain	1	1	1	1
22	40122	Upper boom support	1	1	1	1
23	40130	Lower boom support	1	1	1	1
24	31022	1/2" nut	10	10	10	10
25	31078	1/2" lockwasher	11	11	11	11
26	31093	1/2" x 1" hex bolt	2	2	2	2
27	24612	Discharge stack	1	1	1	1
28	31021	1/2" x 4-1/2" hex bolt	4	4	4	4
29	31043	1/2" flatwasher	11	11	11	11
30	24613	Discharge elbow	1	1	1	1
31	34047	7" squeeze ring	1	1	1	1
32	34089	7" x 30" metal discharge hose	1	1	1	1

**PARTS LIST # 5785**

<b>REF NO.</b>	<b>PART NO.</b>	<b>DESCRIPTION</b>	<b>8BIP HM</b>	<b>11BIP HM</b>	<b>16KHM</b>	<b>16BVGHM</b>
33	31624	3/8" x 7-1/2" turnbuckle	1	1	1	1
34	31627	Upper body support chain	1	1	1	1
35	27261	Standard swing arm - vehicle side	1	1	1	1
36	27262	Standard swing arm - unit side	1	1	1	1
37*	27436	X-long swing arm - vehicle side	1	1	1	1
38*	27264	X-long swing arm - unit side	1	1	1	1
39	31454	Swing arm bushing	2	2	2	2
40	31630	Swing arm pivot pin	1	1	1	1
41	31489	5/8" flatwasher	1	1	1	1
42	31122	1/2" x 1-1/4" hex bolt	5	5	5	5
43	23195	Swing arm locking bracket	1	1	1	1
44	31625	5/8" - 11 handle nut	1	1	1	1
45*	31624	3/8" x 7-1/2" turnbuckle	1	1	1	1
46*	31140	Boom chain (secondary safety Chain for x-long swing arm)	1	1	1	1

\* Optional long swing arm only

**ITEMS NOT SHOWN**

	70863	Housing liner (w/hardware – 16hp only)	--	--	1	1
	71027	Discharge elbow liner (w/hardware)	1	1	1	1
	39058	Battery	--	--	1	--
	31612	Battery holddown	--	--	1	--
	31562	#12 x 1/2" sheet metal screw	--	--	2	--
	31633	Battery cable - positive	--	--	1	--
	31634	Battery cable - ground	--	--	1	--
	39066	8 HP B & S Industrial Plus engine	1	--	--	--
	39067	11HP B & S Industrial Plus engine	--	1	--	--
	39068	16HP Kohler OHC engine	--	--	1	--
	39080	16HP B&S Vanguard engine	--	--	--	1
	31002	5/16-18 x 1-3/4" hex bolt	4	4	4	4
	31003	5/16 lock washer	4	4	4	4
	31004	5/16-18 hex nut	4	4	4	4
	27265	Standard swing arm ass'y - complete	1	1	1	1
*	27311	X-Long swing arm ass'y - complete	1	1	1	1

**SPECIFICATIONS SUBJECT TO CHANGE WITHOUT NOTICE**