

INSTRUCTIONS FOR ASSEMBLING AND OPERATING YOUR GIANT-VAC
MODELS 8500-B-IC - 8500-K - 1100-B-IC

As you unpack your Giant-Vac Tail-Gate Truck Loader, you will find the following parts:

- 1 - Power unit with motor and impeller
- 1 - Carton with an exhaust stack & elbow, hose, nozzle and boom supports.
- 1 - Package of hardware.

Inspect parts for any damage that may have occurred in shipping. If any are found, save the packing boxes and **IMMEDIATELY** notify the transport carrier who delivered your machine, as they are responsible for the damage and are the only ones to make any adjustments. Before leaving our plant, all dimensions are held to close tolerances, and thus, you will have little difficulty in assembling you Giant-Vac Tail-Gate Truck Loader if you follow these steps.

CALIFORNIA PROPOSITION 65 WARNING

Gasoline and Diesel engine exhaust and some of its constituents are known to the State of California to cause cancer, birth defects and other reproductive harm.

As an owner of off-road gasoline or diesel engine equipment and/or as an employer, you also may have an obligation under the California Occupational Safety and Health Act or under Proposition 65 to warn persons exposed to gas and diesel engine exhaust and/or other Proposition 65 chemicals in and around your workplace.

See California Health and Safety Code section 25249.5, Title 22 of the California Code of Regulations at section 1200 *et seq.*, and Title 8 of the California Regulations section 5194.

ASSEMBLY:

1. After removing the power unit from it's carton, insert the pusher rod, Ref. #18, into the lower hole in back of the machine frame. Insert this bolt from the inside. Turn the rod in about 4". Attach the pusher rod handle, Ref. #19, through hole in pusher rod and secure it with a 3/8" lock nut. Next, put a 1/2" flat washer onto the turn-down end of the pusher rod. Attach the front pusher plate, Ref. #24, to the turn-down end of the pusher rod, with the small hole facing in. Secure it with a 1/2" flat washer, 3/8" flat washer, 3/8" lock washer and a 3/8 x 3/4" hex bolt put into the hole in the pusher rod. Repeat for the other side.
2. Install the rear holder arm, Ref. #25, with the channel facing out or to the back of the frame. Secure with a 5/8 x 2-3/4" hex bolt and flat washer into the top hole on the back of the machine frame. On the machine side, use a 5/8" flat washer and a lock nut. Tighten only enough to allow the rear holder arm to swivel up for ease in mounting.
3. Attach the 8" flange, Ref.#5, to the front of the machine with four 5/16 x 3/4" hex bolts and lock washers.

4. Place the exhaust elbow and stack, Ref.#16, onto the blower housing with the elbow positioned to the back of the machine. Attach with two 1/2 x 4-1/2" hex bolts, lock washer, nuts and four 1/2" flat washers.

5. Fasten lower boom support, Ref. #13, to upper boom support, Ref. #14, making sure the upper boom support is going upward, with two 1/2 x 1" hex bolts, lock washers and nuts. Insert the lower boom support through the hole in the elbow and onto the stud on the top of the blower housing.

6. Attach the 8' x 10' intake hose, Ref.#8, onto the intake flange with one of the 8' hose clamps. Then attach the hose support band around the intake hose, about 3-1/2 feet from the end of the hose. Secure the support band with a 5/16 x 1-1/2" hex bolt and lock nut. Then attach the 8' intake nozzle, Ref. #11, to the loose end of the hose and secure the nozzle with the last 8" hose clamp.

7. **CAUTION:** Before mounting the Giant-Vac Tail-Gate Truck Loader, reinforce the tailgate with either sheet steel or 3/4 plywood. This will help prevent damage to the tailgate. Mount the Giant-Vac Tail-Gate Truck Loader onto the tailgate of the pick up truck. Tighten the pusher rods, making sure the unit is tight on the tailgate and that the tailgate is locked. Attach one end of the boom chain to the hole in the upper boom support, then loop the other end of the chain through the eye on the support band and hook the chain at the desired height. Make sure the loop for the boom chain is upward. In general, the boom chain should be adjusted so that the nozzle is approximately 12 inches off the ground.

FOR TRANSPORT: Remove the boom chain and swivel the boom to the side of the debris box and secure with a rope or hardware. Next, put the intake hose over the engine frame and use the rubber tie down, Ref. #29, to hold the intake hose and nozzle for transport.

WHEN TRANSPORTING THE TRUCK LOADER.DO NOT EXCEED 30 M.P.H. HIGH SPEED DRIVING AND POOR ROAD CONDITIONS CAN CAUSE DAMAGE TO THE TRUCK LOADER AND THE PICK UP TRUCK.

DEBRIS BOXES: IMPORTANT: The Giant-Vac Tail-Gate Truck Loader is designed to be used in conjunction with a truck that has a leaf receiver box installed. NEVER run or operate your Giant-Vac Tail-Gate Truck Loader unless it is completely connected to a receiver box and the intake hose is installed.

Following are a few suggestions for constructing a leaf debris box.

To begin with, it is extremely important to have an adequate screen for allowing air to escape. We strongly recommend the entire top of the box be covered with screening. Flattened 1/4" expanded metal mesh or 1/4" square wire makes an excellent screen. The debris box is generally fabricated out of plywood and angle iron. A 3" angle iron frame is first fabricated. Then the sides are lined with 3/4" thick exterior type plywood. A frame is made for the top and then covered

with metal screening. A door should be fabricated from angle iron and plywood with a hinge on top. DO NOT use any thinner plywood, as the internal pressure is apt to blow the sides out. A hole should be cut in the rear door so that the leaf loader can exhaust debris into the box. Make sure that this is a tight fit. Also, a rubber gasket (not supplied) should be placed around this hole. This will also help keep debris from the engine air intake of the truck loader.

**NEVER INSERT ANY BODY PART OR OTHER FOREIGN OBJECT IN ANY
OPENING WHILE THE MACHINE IS RUNNING.**

MOTOR INSTRUCTIONS: You have received a complete engine manual with your machine. Be sure to especially note the instructions on OILING. ALL MACHINES ARE SHIPPED WITHOUT OIL OR GASOLINE UNLESS OTHERWISE NOTED. If you have any difficulties with the engine, check the Yellow Pages of your phone book for the engine dealer nearest you, rather than us, as the engines are under their own manufacturer's warranty.

SAFETY AND OPERATING INSTRUCTIONS

TRAINING:

1. Regard your Giant-Vac as a piece of power equipment and teach this regard to all who will operate this unit.
2. NEVER allow children or young teenagers to operate the Giant-Vac.
3. Be sure you know how to stop the engine at a **MOMENT**.
4. Instruct children to keep away from the area of operation at all times.

PREPARATION:

1. Before starting operation, clear the entire work area of all debris that could catch on or be thrown by the Truck Loader.
2. Unless there is very good artificial light, use only during daylight.
3. Fill gasoline driven machines outdoors. Avoid spilling gasoline and DO NOT fill the engine while it is running or while you are smoking.
4. Be certain the intake hose boom is properly adjusted according to the instructions found in an earlier section of this manual.

OPERATION:

1. NEVER INSERT ANY BODY PART OR OTHER FOREIGN OBJECT IN ANY OPENING WHILE THE MACHINE IS RUNNING.
2. **CAUTION: WHEN TRANSPORTING THE TRUCK LOADER, DO NOT EXCEED 30 M.P.H. HIGH SPEED DRIVING AND POOR ROAD CONDITIONS CAN CAUSE DAMAGE TO THE TRUCK LOADER AND THE TOW VEHICLE. MAKE SURE THE HOSE AND BOOM ARE SECURED BEFORE TOWING YOUR TRUCK LOADER.**
3. Do not operate with any guards or component parts removed from unit.
4. Before making any adjustments or repairs, stop engine and remove spark plug wire.
5. While in operation, keep all parts of body away from intake and exhaust sections.
6. When operating machine, keep people and pets a safe distance away.
7. Before starting, be certain to check the engine's OIL AND GASOLINE. (See engine manufacturer's Service Manual.) NEVER check the engine while engine is running or while you are smoking. Check ONLY when engine is cold.

8. Before starting the engine, be certain the unit is completely assembled. With your right hand, set the throttle control to the "on" position. When the engine is cold, you might have to initially choke the engine. (The choke lever is next to the carburetor.) Next, with your left hand, pull the recoil starter rope slowly until you feel compression, then pull fast and steady. Do not let the recoil starter rope snap back by itself. This may damage the rope or recoil starter assembly. After the engine starts, move the throttle lever down to approximately halfway.

9. After the machine is running, check the adjustment of the chain on the hose support. This is vitally important for ease of operation. To make this check, speed up the engine. You should then be able to push the nozzle to the ground and pull it back up by using three fingers of one hand. If you can not operate the nozzle accordingly, the chain should be readjusted. In operation, you will note the boom will readily swing over a 10 foot path.

10. We recommend the following for efficient use of the Truck Loader: If the leaves are dry, run the machine at approximately half throttle. This will help reduce the amount of small particles of debris escaping through the exhaust screen. When the leaves are wet or partially frozen, run the machine at full throttle. If the pile of leaves is high, a short back and forth flicking motion will effectively eat into the pile of leaves. If the leaves are wet, it is best to move into the pile with a gulping motion. In this way, you will pick up a quantity and then move the hose slightly away from the pile to allow the leaves to rapidly flush through.

11. Never use your Giant-Vac Tail-Gate Truck Loader to pick up sand or stones. Debris like this is very abrasive and can damage the impeller and blower housing.

12. The Truck Loader is designed to be used in conjunction with a truck that has a receiver box installed. Be sure the receiver box is of adequate construction to withstand the high velocity and force of the incoming debris. **NEVER** run or operate your Truck Loader unless it is completely connected to a receiver box and the intake hose is installed.

13. **NEVER** allow a person to ride, sit or stand on the Truck Loader. **NEVER** allow a person to ride, sit or stand on the towing vehicle other than in the driver's cab of the towing vehicle.

14. Make sure that the driver of the towing vehicle has the operator of the Truck Loader in full view at all times. Also, when operating the Truck Loader, instruct the operator to stay to the side of the machine, **NEVER** in front or behind.

MAINTENANCE AND STORAGE:

1. Follow implicitly the engine manufacturer's recommendations for maintenance and storage.

2. Never adjust the Truck Loader or change attachments until the engine has been turned off and the spark plug wire has been disconnected.

3. If carburetor adjustment is necessary, stand to one side and keep feet and hands in the clear while making adjustments.

4. Keep engine free from accumulations of grass, leaves or excessive grease. An accumulation of these combustible materials may result in a fire.
5. Store gasoline in a safe and approved container in a cool dry place.
6. Keep the Truck Loader and fuel container in locked storage to prevent children from play and and/or tampering with them.
7. Gasoline powered equipment or fuel containers should not be stored in a basement or any closed area where heating or heat appliances or open pilot lights are present, unless the fuel is completely drained from the power equipment and the fuel containers.

CAUTION

PLEASE NOTE THE FOLLOWING:

UNIT COULD CAUSE DAMAGE TO PICK-UP TAILGATE. PLEASE REINFORCE IT WITH EITHER SHEET STEEL OR 3/4 PLYWOOD.

AFTER UNIT IS INSTALLED ON PICK-UP TAILGATE, DO NOT EXCEED 30 M.P.H.

HIGH SPEED DRIVING AND POOR ROAD CONDITIONS CAN CAUSE DAMAGE TO LEAF LOADER AND PICK-UP TRUCK.

GIANT-VAC WARRANTY

GIANT-VAC MFG. INCORPORATED, here-in-after called Giant-Vac, warrants each new Giant-Vac to the original retail purchaser of the new Giant-Vac equipment to be free from manufacturing defects in normal service for a period of 90 days, unless it is used for rental purposes, which limits the warranty to 30 days. This warranty does not apply to engines, tires or other parts that are purchased and warranted by their manufacturer. Items such as bags, grass catchers, hoses and blades are not warranted, as these are considered expendable items. This warranty does not include equipment failures due to normal wear.

Any obligation under this warranty is expressly limited to the replacement or repair, at an authorized servicing Giant-Vac dealer, or at a point designated by us, of such parts as appear to us to have been defective. All defective parts have to be returned freight prepaid before credit will be issued.

We shall not be liable for transportation charges in connection with the replacement or repair of defective parts.

This warranty does not apply to a Giant-Vac upon which repairs or alterations have been made by others except with our prior written approval.

We shall not be liable for consequential damages or contingent liabilities for the fitness of any Giant-Vac for any particular purpose.

We make no other express, implied or statutory warranty, nor is anyone authorized to make any in our behalf.

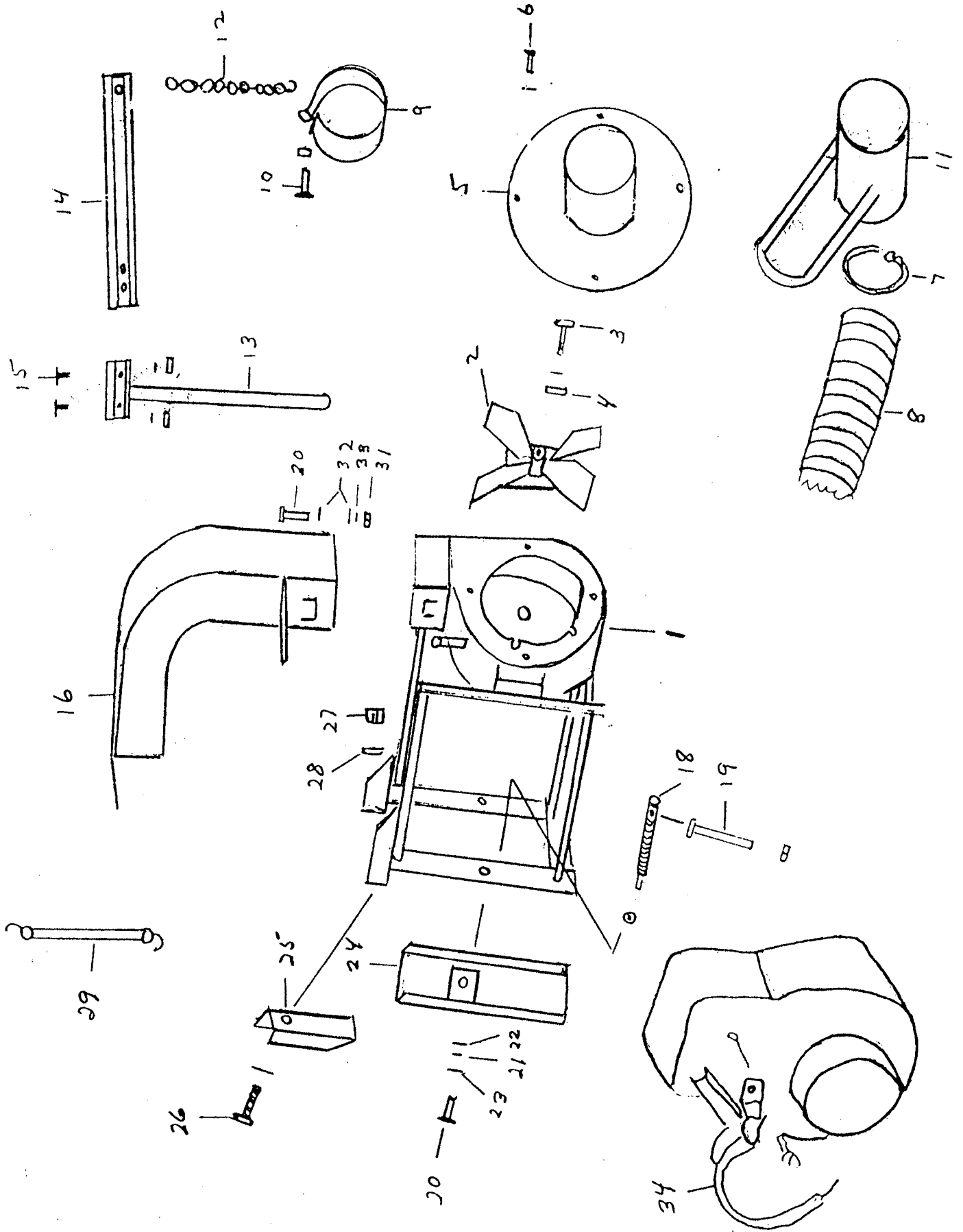
GIANT-VAC MFG. INCORPORATED

P.O. BOX 195

SOUTH WINDHAM, CT. 06266

PHONE: 860-423-7741 FAX: 860-423-2654

GIANT-VAC TAIL-GATE TRUCK LOADER MODELS 8500-B-IC - 7500-K - 8500-K - 1100-B-IC



PARTS LIST NO. 5774

<u>REF.</u> <u>NO.</u>	<u>PART</u> <u>NO.</u>	<u>DESCRIPTION</u>	<u>8500-B-IC</u>	<u>8500-K</u>	<u>1100-B-IC</u>
1	10114	Motor base & housing	1		
1	10116	Motor base & housing		1	
1	10117	Motor base & housing			1
2	21543	Impeller	1	1	
2	21545	Impeller			1
3	31479	7/16-20 x 2" impeller bolt, washers & key	1	1	1
5	21088	Intake flange	1	1	
5	20189	Intake flange			1
6	31487	5/16 x 3/4" hex bolt & lock washer	4	4	4
7	34015	8" hose clamp	2	2	2
8	34006	Intake hose 8" x 10'	1	1	1
9	40120	Hose support band	1	1	1
10	31485	5/16 x 1-1/2" hex bolt and nut	1	1	1
11	20149	Intake nozzle 8"	1	1	1
12	31486	Boom chain	1	1	1
13	40121	Lower boom support	1	1	1
14	40122	Upper boom support	1	1	1
15	31488	1/2 x 1-1/4" hex bolt, washer & nut	2	2	2
16	24591	Exhaust elbow & stack	1	1	1
18	31494	Pusher rod 5/8 x 7"	2	2	2
19	31495	Pusher rod handle	2	2	2
20	31492	3/8 x 3/4" hex bolt	2	2	2
21	31493	3/8" flat washer	2	2	2
22	31119	1/2" flat washer	4	4	4
23	31115	3/8" lock washer	2	2	2
24	23158	Front pusher plate	2	2	2
25	23159	Rear holder arm	2	2	2
26	31491	5/8 x 2-3/4" hex bolt	2	2	2
27	31490	5/8" lock nut	2	2	2
28	31489	5/8" flat washer	2	2	2
29	31358	Rubber tie down	1	1	1
30	31117	1/2 x 4-1/2" hex bolt	2	2	2
31	31118	1/2" nut	2	2	2
32	31119	1/2" flat washer	2	2	2
33	31432	1/2" lock washer	4	4	4
34	35000	Throttle control	1	1	1

<u>REF.</u> <u>NO.</u>	<u>PART</u> <u>NO.</u>	<u>DESCRIPTION</u>	<u>8500-B-IC</u>	<u>8500-K</u>	<u>1100-B-IC</u>
<u>ITEMS NOT SHOWN</u>					
	31604	Anti-vibration bracket	1		
	31605	Anti-vibration bracket			1
	39035	8 H.P. Briggs & Stratton I/C engine	1		
	39007	8 H.P. Kohler engine		1	
	39037	11 H.P. B&S I/C engine			1

ALL SPECIFICATIONS SUBJECT TO CHANGE WITHOUT NOTICE.