

ASSEMBLY AND OPERATIONS INSTRUCTIONS  
FOR  
GIANT-TRUCK LOADER MODELS  
6500TM - 6800TM - 9800TM

Your shipment of a Giant-Truck Loader should consist of the following parts:

- 1 - Power unit and blower housing assembly with forward leveling support stand.
- 1 - Axle and draw bar, containing leveling jack and a 3 inch round hitch.
- 1 - 4 foot length by 10 1/2 inch square straight exhaust section.
- 1 - 10 1/2 inch square to 12 inch round exhaust section.
- 1 - 5 foot length of 12 inch flexible metal hose.
- 1 - Intake flange.
- 1 - 8 foot length of intake hose with wear strip.
- 1 - Intake nozzle.
- 1 - Boom assembly.
- 1 - Hose support band
- 1 - Length of chain to connect hose support band to boom.
- Necessary hardware for assembly.
- 1 - Engine manual.

Inspect parts for any damage that might have occurred in shipping. If any is found or any shortages noted, notify the transport carrier who delivered your machine as he is responsible for the damage and is the only one to make any adjustments. Before leaving our plant, all components were completely inspected. All manufacturing dimensions are held to close tolerances, and thus, you will have little difficulty in assembling your Giant-Truck Loader, if you follow these steps.

ENGINE INSTRUCTIONS: An engine manual is supplied with each shipment. This should be read carefully. Instructions on oil changes should be carefully noted to ensure maximum engine life.

We recommend that the engine be run at a fast idle for at least 6 hours. Following this, the engine should be re-tuned. A good check should include the carburetor and timing adjustments. The governor should be set at approximately 50 RPM under top speed.

The engine is warranted by the engine manufacturer. Please be certain to mail to them, the warrantee card, IMMEDIATELY. If any engine problems exist, please contact their nearest service center as only they can authorize any warrantee claims.

ASSEMBLY: The axle should be bolted to the lower portion of the blower housing in the most forward position in relation to the blower housing. This ensures optimum balance for operation conditions.

The forward kick stand should then be lowered to level the unit. The aft screw jack should then be cranked down to steady the machine.

The exhaust sections should next be installed. Each section is secured by four 3/8 inch bolts through the corner clips and two 1/2 inch bolts on the side clips. The 1/2 inch bolts should be securely locked as a safety precaution.

The boom holder is located on the straight four foot section. This should be so positioned that the boom is located over the intake flange. The square to round exhaust section is next fastened to the end of the curved square section. Again, make certain the 1/2 inch bolts are securely locked.

The boom should then be installed in the boom holder. This is done by sliding the vertical arm into the upper bracket and then dropping down into the lower bracket. The outrigger arm is next installed and fastened with a 1/2 inch bolt and lock nuts. The threaded support spring arm is fastened which completes this assembly.

HOSE ASSEMBLY AND POSITIONING: The hose is next installed and secured to the flange by means of a stainless steel hose clamp. Following this, the boom hose support band is slipped over the hose. This should be secured about 2 feet from the end of the hose. The pick up nozzle is next installed and fastened with a second hose clamp.

A chain connects the hose support band to the end of the boom. It is vitally important that this chain is adjusted correctly for ease of operation. In general, the chain should be so adjusted that the nozzle is approximately 12 inches off the ground.

The ultimate check to be certain this adjustment is correct takes place after the machine is running at operating speed. To make this check, speed up the engine. You should then be able to push the nozzle to the ground and pull it back up by using three fingers of one hand. If you cannot operate the nozzle accordingly, either the chain should be re-adjusted or the spring tension of the boom assembly changed. A few minutes time in adjusting this correctly will ensure ease in operation.

CONNECTING TO TRUCK; Your Giant Truck Loader is very versatile. It can be readily mounted to a dump truck, garbage packer, etc. Many users find it advantageous to mount the hitch off center and to the right hand side of the truck. In this way, the Giant-Truck Loader tows closer to the curb.

After the Truck-Loader is hitched to the truck, a 16 inch diameter hole should be cut in the back of the truck. This should be directly over the hitch and at the same height as the exhaust section. A rubber gasket should be placed around this hole. A 14 inch inner tube makes an ideal gasket for this.

A 5 foot section of flexible metal hose goes through this hole. It is then slightly curved and slipped over the end of the square to round. This metal hose should then be tack welded or bolted to the square to round.

OPERATION: Your Giant-Truck Loader is a very easy machine to operate. Be certain the boom is properly adjusted, according to the instructions found in an earlier section of this manual.

In operation, you will note the boom will readily swing over a 10 foot path. This allows you to readily clean a wide area, efficiently. If the pile is high, a short back and forth flicking motion will effectively eat into the pile of leaves.

If the leaves are wet, it is best to move into the pile with a "gulping" motion. In this way, you will pick up a quantity and then move the hose slightly away from the pile to allow the leaves to rapidly flush through.

When the truck is loaded, the unit may readily be uncoupled from the truck. To do this, first lower the rear support stand. Next, crank down the forward jack. The machine is next uncoupled from the truck which is now ready to go to the dump.

The reverse is performed for re-coupling. Quite often, a "U" bracket placed on the end of a pole is used to support and guide the flexible metal hose into the aperture in the truck.

DEBRIS BOXES:

Your Giant-Truck Loader can be readily used in conjunction with a dump truck or garbage packer. The following are a few thoughts which we hope might be helpful in constructing these boxes.

To begin with, it is important to have an adequate screened section for allowing the tremendous volume of air that your Giant-Truck Loader gulps up each minute, to escape. As a matter of fact, we strongly recommend the entire top be covered with screening. One inch expanded mesh or 1/4 inch square wire makes an excellent screen. The theory behind this is quite simple. For example, if 10 square feet of exhaust section would produce a 100 miles per hour exhaust velocity, this would be cut down to a 10 miles per hour exhaust velocity if the opening was increased to 100 square feet.

If a dump truck is used, the collection box is generally fabricated out of ply-wood and angle iron. Quite often, a 3 inch angle iron frame is first fabricated. The sides are lined with 3/4 inch thick exterior type plywood. Do not use any thinner plywood as the internal pressure is apt to blow the sides out.

A frame is made for the top which is next covered with metal screening. The dump truck door should be removed. A door should then be fabricated which is hinged at the top. This also can be fabricated from angle iron and ply-wood.

WARRANTY: Within 90 days from the purchase date, Giant-Vac Mfg., Incorporated will replace free of charge for the original purchaser, any part or parts returned to our factory at South Windham, Connecticut, and found by us to be defective in material and/or workmanship.

SAFETY AND OPERATING INSTRUCTIONS  
FOR GIANT-VAC LEAF LOADERS

**CAUTION**  
**ROTATING PARTS**

1. BEFORE OPERATING READ OPERATORS MANUAL FOR OPERATING AND SAFETY INSTRUCTIONS.
2. DO NOT OPERATE WITH ANY GUARDS OR COMPONENT PARTS REMOVED FROM UNIT.
3. BEFORE MAKING ANY ADJUSTMENTS OR REPAIRS, STOP ENGINE AND REMOVE SPARK PLUG WIRES ON GAS ENGINES - ON DIESEL ENGINE BE SURE ENGINE KILL SWITCH IS ACTIVATED.
4. WHILE IN OPERATION KEEP ALL PARTS OF BODY AWAY FROM INTAKE AND EXHAUST SECTIONS.
5. WHEN OPERATING MACHINE KEEP PEOPLE AND PETS A SAFE DISTANCE AWAY.

TRAINING:

1. Regard your Giant-Vac Leaf Loader as a piece of power equipment and teach this regard to all who operate this unit.
2. Never allow children or young teen-agers to operate the Giant-Vac Leaf Loader.
3. Be sure you know how to stop the engine at a **MOMENT'S NOTICE**.
4. Instruct children to keep away from the area of operation at all times.

PREPARATION:

1. Before starting operation, clear the entire work area of all debris that could catch on or be thrown by the Giant-Vac Leaf Loader.
2. Unless there is very good artificial light, use only during the daylight hours.
3. Fill the Giant-Vac Leaf Loader fuel tank outdoors. Avoid spilling fuel and do not fill the tank while engine is running or while you are smoking.

OPERATION:

1. Do not operate with any guards or component parts removed from unit.
2. Before making any adjustments or repairs, stop engine and remove the spark plug wire on gas engines - on diesel engines be sure engine kill switch is activated.
3. While in operation, keep all parts of body away from intake and exhaust sections.
4. When operating machine, keep people and pets a safe distance away.

GIANT-TRUCK LOADER  
POWER UNIT - TRAILER MOUNTED  
MODELS 3000 - 3001-C - 6001-C - 6500 - 6800 - 9800

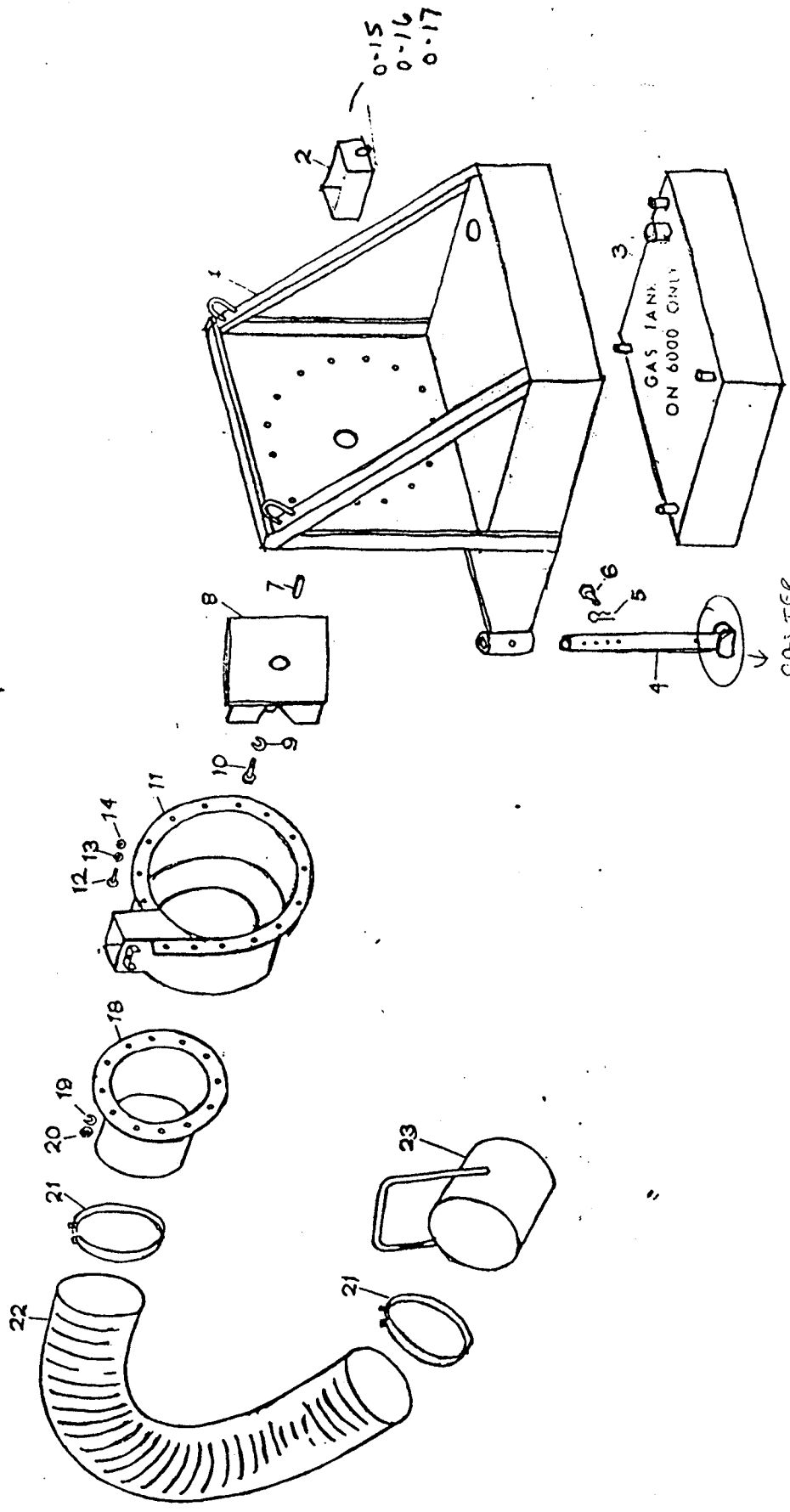
| REF.<br>NO. | PART<br>NO. | DESCRIPTION                         | 3000   | 6500   | 6800 | 9800 |
|-------------|-------------|-------------------------------------|--------|--------|------|------|
|             |             |                                     | 3001-C | 6001-C |      |      |
| 1           | 10036       | Engine Base                         | 1      |        |      |      |
| 1           | 10037       | Engine Base                         |        | 1      |      |      |
| 1           | 10038       | Engine Base                         |        |        | 1    |      |
| 1           | 10074       | Engine Base                         |        |        |      | 1    |
| 2           | 40100       | Battery Box                         | 1      |        |      |      |
| 2           | 40101       | Battery Box                         |        | 1      |      |      |
| 2           | 40102       | Battery Box                         |        |        | 1    | 1    |
| 3           | 40103       | Gas Tank                            |        | 1      |      |      |
| 3           | 40104       | Gas Tank                            |        |        | 1    |      |
| 3           | 40116       | Gas Tank                            |        |        |      | 1    |
| 4           | 40105       | Adjustable Leg                      | 1      | 1      | 1    | 1    |
| 5           | 31126       | Spring Clip                         | 1      | 1      | 1    | 1    |
| 6           | 31125       | Pin 3" x 3/8"                       | 1      | 1      | 1    | 1    |
| 7           | 31127       | Impeller Key                        | 1      |        |      |      |
| 7           | 31128       | Impeller Key                        |        | 1      |      |      |
| 7           | 31129       | Impeller Key                        |        |        | 1    |      |
| 7           | 31275       | Impeller Key                        |        |        |      | 1    |
| 8           | 21518       | Impeller                            | 1      |        |      |      |
| 8           | 21519       | Impeller                            |        | 1      |      |      |
| 8           | 21520       | Impeller                            |        |        | 1    |      |
| 8           | 21532       | Impeller                            |        |        |      | 1    |
| 9           | 31326       | Lockwasher                          | 1      |        |      |      |
| 9           | 31326       | Lockwasher                          |        | 1      |      |      |
| 9           | 31326       | Lockwasher                          |        |        | 1    | 1    |
| 10          | 31327       | Impeller Bolt (Allen 5/8" x 2"      | 1      |        |      |      |
| 10          | 31328       | Impeller Bolt (Allen) 5/8" x 2-1/2" |        | 1      |      |      |
| 10          | 31329       | Impeller Bolt                       |        |        | 1    |      |
| 10          | 31276       | Impeller Bolt                       |        |        |      | 1    |
| 11          | 10041       | Blower Housing                      | 1      |        |      |      |
| 11          | 10042       | Blower Housing                      |        | 1      |      |      |
| 11          | 10043       | Blower Housing                      |        |        | 1    |      |
| 11          | 10075       | Blower Housing                      |        |        |      | 1    |
| 12          | 31124       | Hex Head Bolt 3/8" x 1"             | 13     |        |      |      |
| 12          | 31122       | Hex Head Bolt 1/2" x 1-1/4"         |        | 18     | 18   | 18   |
| 13          | 31115       | Lockwasher 3/8"                     | 13     |        |      |      |
| 13          | 31121       | Lockwasher 1/2"                     |        | 18     | 18   | 18   |
| 14          | 31116       | Hex Nut 3/8"                        | 13     |        |      |      |
| 14          | 31118       | Hex Nut 1/2"                        |        | 13     | 13   | 13   |
| 15          | 31123       | Hex Bolt 3/8" x 1-1/4"              | 2      | 2      | 2    | 2    |
| 16          | 31115       | Lockwasher 3/8"                     | 2      | 2      | 2    | 2    |
| 17          | 31116       | Hex Nut 3/8"                        | 2      | 2      | 2    | 2    |
| 18          | 20159       | Intake Flange 16"                   | 1      |        |      |      |
| 18          | 20160       | Intake Flange 18"                   |        | 1      | 1    |      |
| 18          | 20179       | Intake Flange 18"                   |        |        |      | 1    |
| 19          | 31121       | Lockwasher 1/2"                     | 12     | 16     | 16   | 16   |
| 20          | 31118       | Hex Nut 1/2"                        | 12     | 16     | 16   | 16   |

PARTS LIST NO. 5721

| <u>REF.</u><br><u>NO.</u> | <u>PART</u><br><u>NO</u> | <u>DESCRIPTION</u>     | <u>3000</u><br><u>3001-C</u> | <u>6500</u><br><u>6001-C</u> | <u>6800</u> | <u>9800</u> |
|---------------------------|--------------------------|------------------------|------------------------------|------------------------------|-------------|-------------|
| 21                        | 34024                    | Clamp 16"              | 2                            |                              |             |             |
| 21                        | 34025                    | Clamp 18"              |                              | 2                            | 2           | 2           |
| 22                        | 34022                    | Intake Hose 16" x 7'   | 1                            |                              |             |             |
| 22                        | 34023                    | Intake Hose 18" x 8'   |                              | 1                            | 1           | 1           |
| 23                        | 20157                    | Intake Nozzle 16"      | 1                            |                              |             |             |
| 23                        | 20158                    | Intake Nozzle 18"      |                              | 1                            | 1           | 1           |
|                           | 39021                    | Battery                | 1                            | 1                            | 1           | 1           |
|                           | 39022                    | 30 HP Wisconsin Engine | 1                            |                              |             |             |
|                           | 39023                    | 65 HP Wisconsin Engine |                              | 1                            |             |             |
|                           | 39030                    | 63 HP White Engine     |                              |                              | 1           |             |
|                           | 39031                    | 130 HP Ford Engine     |                              |                              |             | 1           |

January 1978

# GIANT TRUCK LOADER POWER UNIT MODEL 3000 & MODEL 6000



CASTER  
WHEEL  
IS 6" DIA.  
SAND PLASTIC

PARTS LIST NO. 5723

GIANT-TRUCK LOADER  
EXHAUST SECTION - TRAILER MOUNT  
MODELS 3000 - 3001-C - 6001-C - 6500 - 6800

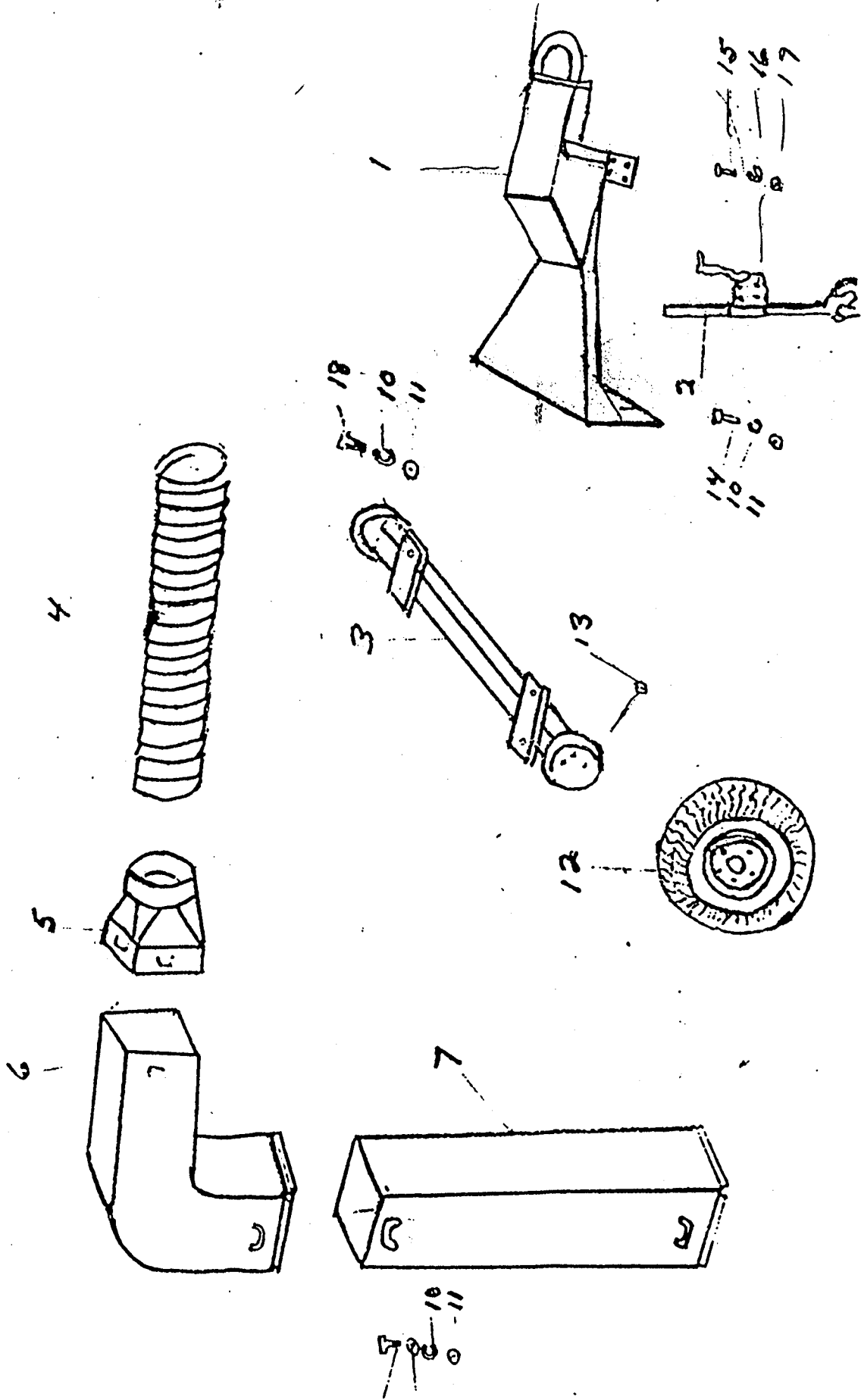
| <u>REF.</u><br><u>NO.</u> | <u>PART</u><br><u>NO.</u> | <u>DESCRIPTION</u>            | <u>3001-C</u><br><u>3000</u> | <u>6001-C</u><br><u>6500</u> | <u>6800</u> |
|---------------------------|---------------------------|-------------------------------|------------------------------|------------------------------|-------------|
| 1                         | 38004                     | Draw Bar                      | 1                            | 1                            | 1           |
| 2                         | 33040                     | Support Jack                  | 1                            | 1                            | 1           |
| 3                         | 33048                     | Axle and Hubs                 | 1                            |                              |             |
| 3                         | 33049                     | Axle and Hubs                 |                              | 1                            |             |
| 3                         | 33050                     | Axle and Hubs                 |                              |                              | 1           |
| 4                         | 34026                     | Metal Exhaust Hose 12" x 5'   | 1                            | 1                            | 1           |
| 5                         | 24538                     | Square to Round 12" x 10-1/2" | 1                            |                              |             |
| 5                         | 24539                     | Square to Round 12" x 12"     |                              | 1                            | 1           |
| 6                         | 24540                     | Exhaust Elbow                 | 1                            |                              |             |
| 6                         | 24541                     | Exhaust Elbow                 |                              | 1                            | 1           |
| 7                         | 24542                     | Exhaust Stack                 | 1                            |                              |             |
| 7                         | 24543                     | Exhaust Stack                 |                              | 1                            | 1           |
| 8                         | 31117                     | Hex Bolt 1/2" x 4-1/2"        | 6                            | 6                            | 6           |
| 9                         | 31119                     | Flat Washer 1/2"              | 16                           | 16                           | 16          |
| 10                        | 31121                     | Lockwasher 1/2"               | 21                           | 21                           | 21          |
| 11                        | 31118                     | Hex Nut 1/2"                  | 21                           | 21                           | 21          |
| 12                        | 33051                     | Tire and Rim 15"              | 2                            | 2                            | 2           |
| 13                        | 31148                     | Lug Nut                       | 10                           | 10                           | 10          |
| 14                        | 31122                     | Hex Bolt 1/2" x 1-1/4"        | 5                            | 5                            | 5           |
| 15                        | 31114                     | Hex Bolt 3/8" x 1"            | 4                            | 4                            | 4           |
| 16                        | 31115                     | Lockwasher 3/8"               | 4                            | 4                            | 4           |
| 17                        | 31116                     | Hex Nut 3/8"                  | 4                            | 4                            | 4           |
| 18                        | 31147                     | Hex Bolt 1/2" x 1-1/2"        | 4                            | 4                            | 4           |



FOR MODELS 3000 - 6500 - 6800 - 6800 TM

TRAILER MOUNTED

EXHAUST SECTION



PARTS LIST NO. 5722

HOSE SUPPORT BOOM  
FOR  
GIANT-TRUCK LOADERS

| <u>REF.</u><br><u>NO.</u> | <u>PART</u><br><u>NO.</u> | <u>DESCRIPTION</u>      | <u>1001-C</u><br><u>1601-C</u> | <u>1901-C</u><br><u>2001-C</u> | <u>3001-C</u> | <u>6500</u><br><u>6600</u> | <u>6800</u> | <u>9800</u> |
|---------------------------|---------------------------|-------------------------|--------------------------------|--------------------------------|---------------|----------------------------|-------------|-------------|
| 1                         | 40107                     | Boom Vertical Member    | 1                              | 1                              | 1             | 1                          | 1           | 1           |
| 2                         | 40106                     | Boom Horizontal Member  | 1                              | 1                              | 1             | 1                          | 1           | 1           |
| 3                         | 40108                     | Threaded Spring Guide   | 1                              | 1                              | 1             | 1                          | 1           | 1           |
| 4                         | 31330                     | Hex Nut 5/8"            | 2                              | 2                              | 2             | 2                          | 2           | 2           |
| 5                         | 31331                     | Flat Washer 5/8"        | 2                              | 2                              | 2             | 2                          | 2           | 2           |
| 6                         | 31332                     | Boom Coil Spring        | 1                              | 1                              | 1             | 1                          | 1           | 1           |
| 7                         | 31333                     | Hex Head Bolt 1/2" x 3" | 1                              | 1                              | 1             | 1                          | 1           | 1           |
| 8                         | 31334                     | Jam Nut 1/2"            | 4                              | 4                              | 4             | 4                          | 4           | 4           |
| 9                         | 31335                     | Hex Head Bolt 1/2" x 4" | 1                              | 1                              | 1             | 1                          | 1           | 1           |
| 10                        | 31140                     | Chain                   | 1                              | 1                              | 1             | 1                          | 1           | 1           |
| 11                        | 40109                     | Hose Support Band       | 1                              |                                |               |                            |             |             |
| 11                        | 40110                     | Hose Support Band       |                                | 1                              |               |                            |             |             |
| 11                        | 40111                     | Hose Support Band       |                                |                                | 1             |                            |             |             |
| 11                        | 40112                     | Hose Support Band       |                                |                                |               | 1                          | 1           | 1           |
| 12                        | 31141                     | Hex Bolt 5/16" x 3"     | 1                              | 1                              | 1             | 1                          | 1           | 1           |
| 13                        | 31142                     | Hex Head Nut 5/16"      | 2                              | 2                              | 2             | 2                          | 2           | 2           |
| 14                        | 31143                     | Flat Washers 5/16"      | 2                              | 2                              | 2             | 2                          | 2           | 2           |

MAY 1984