
THE GIANT-VAC

574-596 VAC

MODELS 574 - 596

OPERATOR'S MANUAL

Congratulations!

You have just purchased one of the finest pieces of outdoor power equipment on the market today. If properly cared for, your Giant-Vac 574/596 Vac will provide years of dependable service. Please read and follow this instruction manual carefully in order to get the most out of your new equipment.

As you unpack your unit, you will find the following parts in two cartons:

1 Carton containing:

- Power unit
- Handle assembly in four parts
- Set front and rear wheels (front casters for 574)
- Height adjustment lever assembly in two parts
- Package of hardware and assembly components
- Package containing operating manuals and warranty registration

1 Carton containing:

- Nose cone
- Discharge elbow
- Debris bag

Your Giant-Vac 574/596 Vac requires very little assembly. Simply follow the instructions contained within this manual to begin enjoying the benefits of your new unit.

Each Giant-Vac product leaves our factory in excellent condition; occasionally, however, some damage may occur during shipment. If any such damage is found upon initial inspection, *immediately* notify the transport carrier who delivered your machine, as they are solely responsible for such damage, as well as any subsequent adjustments necessary.

CALIFORNIA PROPOSITION 65 WARNING

Gasoline and Diesel engine exhaust and some of its constituents are known to the State of California to cause cancer, birth defects and other reproductive harm.

As an owner of off-road gasoline or diesel engine equipment and/or as an employer, you also may have an obligation under the California Occupational Safety and Health Act or under Proposition 65 to warn persons exposed to gas and diesel engine exhaust and/or other Proposition 65 chemicals in and around your workplace. See California Health and Safety Code section 25249.5, Title 22 of the California Code of Regulations at Section 1200 *et seq.*, and Title 8 of the California Code of Regulations Section 5194.

10/01 Revision

1

SAFETY RULES REGARDING OUTDOOR POWER EQUIPMENT

IMPORTANT! READ THE FOLLOWING SAFETY RULES CAREFULLY BEFORE ASSEMBLING OR OPERATING UNIT:

- Regard your Giant-Vac as a piece of power equipment and teach this regard to all who will operate this unit. Never allow children or young teenagers to operate the unit.
- Always wear appropriate safety equipment when operating this unit. Proper eye, ear, and breathing protection is a must.
- Be sure you know how to stop both the unit and the engine at a **MOMENT'S NOTICE**. Refer to the operation section of this manual, as well as the engine manual.
- Do not operate with any guards or component parts removed from unit.
- Unless there is very good artificial light, use only during daylight.
- Fill gasoline driven machines outdoors. Avoid spilling gasoline and **DO NOT** fill the engine while it is running or while you are smoking.
- While in operation, keep all parts of body away from intake and exhaust sections. Never insert any body part or other foreign object in any opening while the machine is running.
- When operating unit, keep people and pets a safe distance away. Instruct children to keep away from the area of operation at all times.
- Do not use on steep inclines (over 30 degrees), as unit can roll over.
- Before making any adjustments or repairs, stop engine and remove spark plug wire.

FAILURE TO FOLLOW THESE RULES CAN RESULT IN CHRONIC HEALTH PROBLEMS, SERIOUS INJURY, OR EVEN DEATH.

2

UNIT ASSEMBLY

WHEEL ASSEMBLY

REAR WHEELS:

- Insert one 3/4 x 5" hex bolt (Parts List Ref. #16) into center hole of rear wheel (#15), securing with 3/4" nut (#17), threading nut snugly against hub of wheel. Repeat for other wheel.
- Thread end of bolt into top hole in rear of undercarriage (#4). Secure by tightening nut against undercarriage. Repeat for other wheel. Note: Wheel should spin freely but have no play. Adjust by turning bolt in or out.

FRONT WHEELS:

574:

- Remove spring clip (#22) from groove in top of caster (#21).
- Insert caster stud up through boss in front of undercarriage, securing with spring clip.

596:

- Insert one 1/2 x 2-1/2" hex bolt (Parts List Ref. #24) into center hole of front wheel (#23), securing with 1/2" nut (#11), threading nut snugly against hub of wheel.
- Thread end of bolt into threaded side hole in front bar of undercarriage (#4). Secure by tightening nut against undercarriage. Note: Wheel should spin freely but have no play. Adjust by turning bolt in or out.

HANDLE ASSEMBLY

- Slide swaged top of each lower handle (#10,11) into bottom portion of upper handle (#9), aligning holes in lower handles with corresponding holes in upper handle. Note: Lower handles should angle inwards at the bottom.
- Slide one 5/16 x 1-1/2" round slotted head screw (#31) out from the inside through each set of holes.
- Slip holes in forked end of handle brace (#39) over screw ends, securing with one 5/16 lockwasher (#28) and acorn nut (#30). Note: be sure front end of handle brace is angled downward.
- Lower handle assembly onto unit, slipping front hole in handle brace onto threaded stud on top of blower housing (#1), and aligning holes in bottom of lower handles with corresponding holes in engine base. Secure brace with one 3/8 nut and lockwasher (#41), secure lowers with four 5/16 x 1-3/4 hex bolts, lockwashers and nuts (#40). Tighten all bolts securely.
- Fasten throttle control (#13) to left outside of upper handle with two 10-24 x 1 1/2" bolts, lock washers and nuts (#35). Secure cable with two throttle clips (#14), placing one approximately two inches below the brace, the second just below the curve in the upper handle. Be sure there is a generous loop between the engine and the bottom clip to avoid binding.

2

UNIT ASSEMBLY (cont.)

HEIGHT ADJUSTMENT LEVER ASSEMBLY

- Slide threaded stud of U-clip (#12) in through hole in upper right side of upper handle, making sure clip is pointed upwards (see Parts List). Secure with 1/4" lock nut (#12a).
- Slip bottom end of upper lever (#8) down through clip. Teeth should face downward.
- Align holes in top of lower lever (#7) with holes in bottom of upper lever, securing with two 5/16 x 3/4" hex bolts (#8b), lockwashers (#8c) and nuts (#8d).
- Connect bottom of lever to pivot bar of height adjustment cam (#5) with one 5/16 x 3/4" hex bolt (#8b) and lock nut (#46).

NOSE CONE ASSEMBLY

- Fasten nose cone (#3) to front of unit by slipping bottom of bolt ring into clips on front of housing, making sure to align holes in nose cone with holes in housing. Secure with three 3/8" thumb screws (#25) and lockwashers (#25a).

DISCHARGE ELBOW ASSEMBLY

- Fasten discharge elbow (#2) to top of unit by aligning holes in elbow bolt ring with holes in housing discharge and rubber gasket (#38), making sure discharge is directed toward back of unit.
- Slip one 5/16 x 1" hex bolt (#27) up through each of the four sets of holes, securing with one lockwasher (#28) and wing nut (#29).

DEBRIS BAG ATTACHMENT

- Slide mouth of debris bag over discharge elbow, making sure tensioning strap clears anti-slip ridge of discharge elbow. Pull strap taut. Note: make sure bag is right-side up – observe lettering on bag.
- Secure rear of bag to upper handle with clip-on hanger straps.

Assembly of your Giant-Vac 574/596 Vac is now complete.

3

UNIT OPERATION

STARTING THE ENGINE

IMPORTANT NOTE: The procedures outlined within this section are general guidelines, and are in no way meant to replace or supercede engine manufacturer's operating instructions. In order to obtain optimum performance from your engine, refer to your engine manual.

BEFORE STARTING ENGINE:

- Be sure that the unit is completely assembled, all fasteners are tightened securely, and all safety guards and components are in place.
- Be sure to check engine's oil and gasoline* . (See engine manual for recommended oil and gasoline specifications.) **Never** check the engine while it is running or while you are smoking. Check only when engine is cold.
- * **All machines are shipped without oil or gasoline unless otherwise noted.**
- Be sure that fuel valve on engine is set to open position (if applicable).

TO START ENGINE :

- Set throttle control to "ON" position. If engine is cold, set choke (if so equipped). If your engine has a fuel prime button, depress it firmly three times.
- Grasp recoil handle and pull briskly. You may have to pull several times before engine starts. (If engine fails to start within a reasonable amount of time, discontinue and check engine manual for further instructions.) Note: Do not allow recoil rope to snap back into recoil; damage to the rope or recoil could result.
- After engine starts, move throttle control down to approximately half, and turn off choke.

TO SHUT ENGINE DOWN :

- Allow engine to idle for 2-3 minutes before shutting down.
- Set throttle control to 'off' position.
- If engine is not to be started for a prolonged period, turn fuel valve to closed position.

IMPORTANT NOTE: If you experience problems with your engine that cannot be satisfactorily resolved by following the instructions contained within the engine manual, contact your local engine dealer, or call the toll-free service number listed in the repair section of the engine manual. All engine service, warranty or otherwise, is required to be performed by a manufacturer-authorized service center. Giant-Vac, Inc. is neither authorized nor responsible for any type of warranty engine service, nor is it equipped to perform any such service.

3

UNIT OPERATION (cont.)

OPERATING THE VACUUM

ADJUSTING THE NOSE CONE:

- The nose cone should be set to its highest position during transport.
- As a general rule, the heavier the debris being removed, the lower the nose cone should be set. For dry leaves, set the nose cone high and set engine throttle at approximately half. For wet or frozen leaves, set the nose cone low and increase engine throttle to between 3/4 and full.

EMPTYING THE DEBRIS BAG:

- Ideally the bag should be emptied daily; however, a weekly emptying will suffice.

CLEANING THE DEBRIS BAG:

- It is most important that the bag be kept clean for efficient operation of your Giant-Vac. One way to clean the bag is to leave the zipper open and run the engine for a few minutes while shaking the bag vigorously. **TO AVOID INJURY - DO NOT STAND BEHIND THE OPENING WITH THE ZIPPER OPEN WHILE THE ENGINE IS RUNNING.** Turning the bag inside out and sweeping briskly with a stiff broom is sometimes desirable when the bag is extremely dirty. Occasional dry cleaning is recommended.

4

MAINTENANCE AND STORAGE

- Follow **implicitly** the engine manufacturer's recommendations for maintenance.
- Never make any adjustments to the unit until the engine is **off** and the spark plug wire is disconnected.
- If carburetor adjustment is necessary, stand to one side and **keep feet and hands** in the clear while making adjustments.
- Keep engine free of accumulations of grass, leaves or excessive grease. An accumulation of these combustible materials may result in a fire.
- Store gasoline in a **safe and approved** container in a cool, dry place.
- Keep the unit and any fuel containers in locked storage to prevent children from playing and/or tampering with them.
- Do not store gasoline powered equipment or fuel containers in a basement or any closed area where heating or heat appliances or open pilot lights are present, unless the fuel is completely drained from the power equipment and the fuel containers.

GIANT-VAC WARRANTY

GIANT-VAC, INC., here-in-after called Giant-Vac, warrants each new Giant-Vac to the original retail purchaser of the new Giant-Vac equipment to be free from manufacturing defects in normal service for a period of 1 year, unless it is used for rental purposes, which limits the warranty to 30 days. This warranty does not apply to engines, tires or other parts that are purchased and warranted by their manufacturer. Items such as bags, grass catchers, hoses and blades are not warranted, as these are considered expendable items. This warranty does not include equipment failures due to normal wear.

Any obligation under this warranty is expressly limited to the replacement or repair, at an authorized servicing Giant-Vac dealer, or at a point designated by us, of such parts as appear to us to have been defective. All defective parts have to be returned freight prepaid before credit will be issued.

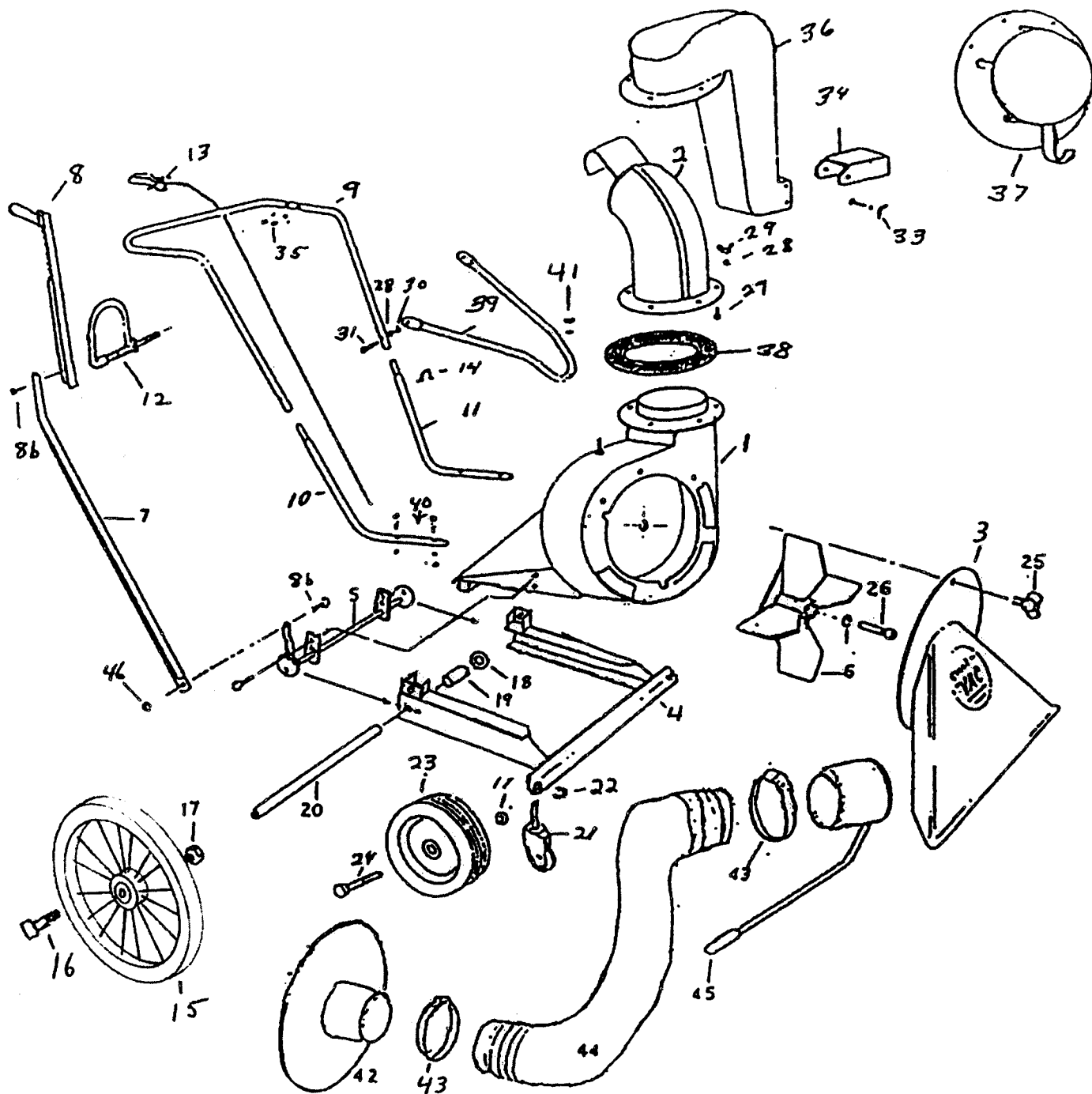
We shall not be liable for transportation charges in connection with the replacement or repair of defective parts.

This warranty does not apply to a Giant-Vac upon which repairs or alterations have been made by others except with our prior written approval.

We shall not be liable for consequential damages or contingent liabilities for the fitness of any Giant-Vac for any particular purpose.

We make no other express, implied or statutory warranty, nor is anyone authorized to make any in our behalf.

GIANT-VAC, INC.
P.O. BOX 195
SOUTH WINDHAM, CT. 06266
PHONE: 860-423-7741 • FAX: 860-423-2654



MODELS: 574 - 596

PARTS LIST NUMBER 5757

PARTS LIST NO. 5757

<u>Ref</u> <u>No</u>	<u>Part</u> <u>No</u>	<u>Description</u>	<u>574</u>	<u>596</u>
1	10093	Blower housing & engine base	1	1
2	24510	Exhaust elbow	1	1
3	27000	Nose cone	1	1
4	27055	Under carriage	1	1
5	27054	Lifter cam	1	1
5a	31031	5/16-18 x 3/4" hex bolt (cam to housing)	4	4
5b	31003	5/16 lock washer	4	4
5c	31004	5/16-18 hex nut	4	4
6	21501	Impeller	1	1
7	23036	Lower lifter arm	1	1
8	23037	Upper lifter arm	1	1
8a	31283	Handle grip - 1 " x 4"	1	1
8b	31031	5/16-18 x 3/4" hex bolt (lifter arm)	3	3
8c	31003	5/16 lock washer	2	2
8d	31004	5/16-18 hex nut	2	2
9	23005	Upper handle	1	1
9a	31590	Foam handle grip - 1 " x 24"	1	1
10	23034	Lower handle - right	1	1
11	23035	Lower handle - left	1	1
12	31102	Lifter handle "U" clip with 1/4-20 stud	1	1
12a	31098	1/4-20 lock nut	1	1
13	35002	Throttle control	1	1
14	31007	Throttle clip	2	2
15	33041	20" wheel	2	2
16	31109	3/4 x 5" hex bolt	2	2
17	31110	3/4" hex nut	2	2
18	31023	3/4" flat washer	2	2
19	33042	Pivot axle spacer set (set of 2)	1	1
20	33044	22" housing lift pivot axle	1	1
20a	31093	1/2-13 x 1 hex bolt	2	2
20b	31094	1/2 lock washer	2	2
20c	31043	1/2 flat washer	2	2
21	33009	4" caster wheel with plain stem	2	--
22	----	Snap clip (comes with 4" caster)	2	--
23	33010	8" X 1.75 semi-pneumatic wheel	--	2
24	31461	1/2-13 x 2-1/2" hex bolt	--	2
24a	31022	1/2-13 hex nut	--	2
25	31026	3/8-16 wing bolt	3	3
25a	31008	3/8" lock washer	3	3
26	31019	3/8-24 x 2" impeller bolt/lock washer/key	1	1
27	31282	5/16 x 1" hex bolt	4	4
28	31003	5/16" lock washer	4	4
29	31336	5/16" wing nut	4	4
30	31028	5/16" acorn nut	2	2
30a	31003	5/16" lock washer	2	2

PARTS LIST NO 5757

<u>Ref</u> <u>No</u>	<u>Part</u> <u>No</u>	<u>Description</u>	<u>574</u>	<u>596</u>
31	31029	5/16 x 1-1/2" round head screw	2	2
33	31055	1/4 x 5/8" bolt, lock washer & wing nut	2	2
34	24513	Blower chute deflector	1	1
35	31010	10-24 x 1-1/2" bolt, nut & lock washer	2	2
36	24512	Blower air chute	1	1
37	20101	Blower intake baffle	1	1
38	31105	Rubber gasket	1	1
39	23011	Handle brace	1	1
40	31057	5/16 x 1-3/4" hex bolt, nut & lock washer	4	4
41	31058	3/8" hex nut and lock washer	1	1
42	20106	4" intake flange	1	1
42	20107	5" intake flange	1	1
43	34011	4" hose clamp	2	2
43	34012	5" hose clamp	2	2
44	34002	4" x 10' hose	1	1
44	34003	5" x 10' hose	1	1
45	20145	4" intake nozzle	1	1
45	20146	5" intake nozzle	1	1
46	31436	5/16-18 lock nut	1	1

ITEMS NOT SHOWN

39077	5.5 HP B&S Intek engine	1	1
31294	5/16-18 x 1-1/2" hex bolt (engine mount)	4	4
31003	5/16 lock washer	4	4
31004	5/16-18 hex nut	4	4
121	Debris bag	1	1

ALL SPECIFICATIONS SUBJECT TO CHANGE WITHOUT NOTICE.