

INSTRUCTIONS FOR ASSEMBLING AND OPERATING YOUR GIANT-THATCHER
MODELS 51GT -- 5GT-I/C -- 81GT-- 81GT-I/C

As you unpack your Giant-Thatcher power unit, you will find the following parts:

- 1 - Power unit with motor, thatcher reel and wheels mounted
- 1 - Set of handles in three parts
- 1 - Height adjustment lever
- 1 - Package of hardware

Inspect parts for any damage that may have occurred in shipping. If any are found, save the packing box and IMMEDIATELY notify the transport carrier who delivered your machine, as they are responsible for the damage, and are the only ones to make any adjustments. Before leaving our plant, all dimensions are held to close tolerances, and thus, you will have little difficulty in assembling your Giant-Thatcher if you follow these steps.

CALIFORNIA PROPOSITION 65 WARNING

Gasoline and Diesel engine exhaust and some of its constituents are known to the State of California to cause cancer, birth defects, and other reproductive harm.

As an owner of off-road gasoline or diesel engine equipment and/or as an employer, you also may have an obligation under the California Occupational Safety and Health Act or under Proposition 65 to warn persons exposed to gas and diesel engine exhaust and /or other Proposition 65 chemicals in and around your workplace. See California Health and Safety Code section 25249.5, Title 22 of the California Code of Regulations at section 1200, *et seq.*, and Title 8 of the California Code of Regulations section 5194.

ASSEMBLY INSTRUCTIONS

HANDLE AND THROTTLE CONNECTIONS: The handles are made in three parts and have a telescopic fit. The handles should be completely assembled and then fastened to the thatcher as a unit. When assembling the handles, it is important that you DO NOT TIGHTEN ANY OF THE BOLTS until the assembly operations are complete. With the bolts loose, there will be enough movement to permit fast and easy assembly. Proceed as follows: Insert the two lower handles into the upper handle until the bolt holes are in line. Fasten with two 5/16 x 1 3/4" hex bolts, lock washers and nuts. DO NOT TIGHTEN THESE BOLTS YET. The handle assembly is now ready to attach to the thatcher. Fasten the lower handles to the base with four 5/16 x 1 3/4" hex bolts, lock washers and nuts. Note that the lower handles are drilled at a 45 degree angle. Make certain the lower handles are assembled to match the holes in the deck. Now that the handles are assembled to the machine, tighten all the bolts. Take the throttle cable and run it along the left side of the handle about 1/3 its length. Secure it with a clip about two inches below the junction of upper and lower handles. The throttle lever is secured to the handle by means of two 10-24 x 1 1/4" bolts, lock washers and nuts. Put the second clip just below

the curve in the upper handle. Make sure you have left a generous loop between the engine and the bottom clip. THIS IS IMPORTANT to prevent the throttle binding. After starting your engine, adjust the length of cable by loosening the screw at the throttle lever for proper engine operation. Next, install the height adjustment lever. Put the lifter handle U-clip, Ref. # 16, on the right side of the upper handle, using the 1/4" lock nut. Then put the upper adjuster arm, Ref. #17, through the U-clip and bolt the lower adjuster arm, Ref. #18, to it with two 5/16 x 3/4" hex bolts, lock washers and nuts. Then bolt the lower adjuster arm to the height adjuster frame, Ref. #2, by putting a 1/2 x 1" hex bolt through the lower adjuster arm, then attach the 1/2" nut to the bolt before attaching the bolt to the height adjuster frame. To operate lifter handle, push handle to front of the machine and lock in U-clip, then pull back to adjust height of thatcher.

SAFETY AND OPERATING INSTRUCTIONS

MOTOR INSTRUCTIONS: You have received a complete engine manual with your machine. Be sure to especially note the instructions on OILING. ALL MACHINES ARE SHIPPED WITHOUT OIL OR GASOLINE UNLESS OTHERWISE NOTED. If you have any difficulties with the engine, check the Yellow Pages of your phone book for the engine dealer nearest you, rather than us, as the engines are under their own manufacturer's warranty.

STARTING INSTRUCTIONS: Before starting the engine, make certain that the height adjustment lever is in the forward position. This is done by pushing the height adjustment lever all the way forward. CHECK TO BE CERTAIN THE THATCHER BLADES ARE CLEAR OF THE GROUND. NOTE: WHEN THE ENGINE IS RUNNING, THE BLADES ARE ROTATING. (This unit is direct drive.) Never start the engine until you are ready to thatch. Place the throttle control in middle position, pull out the choke and start the engine. In most instances, the height adjustment should be set so that the blades cut the soil. Unless recommended by a turf specialist, you should not thatch too deep. Push the machine in a straight line. At the end of a path, raise the thatching reel by pushing the height adjustment lever forward. Turn the machine around and follow back along the previously thatched path. We definitely recommend this back and forth pattern rather than a square pattern as a more uniform thatching job will result. Make certain your Giant-Thatcher is in a raised position before you stop the unit.

THATCHING: We manufacture various types of thatch reels. For an explanation of these, please see our brochure. In general, for fine grasses, such as a Golf Course Green, a straight blade is mostly used. For general thatching, we recommend the flail blades as these are less susceptible to damage if an item such as a rock is encountered.

CLEAN-UP: After thatching, the lawn should be thoroughly cleaned to be certain all of the waste is removed. We strongly recommend a Giant-Vac for this operation. A Giant-Vac will pick up all of this debris and not push any of the dead thatch back into the soil.

GENERAL MAINTENANCE: Your Giant-Thatcher has been carefully engineered to give you excellent service. The following are a few thoughts to keep your maintenance to a minimum. Make certain your Giant-Thatcher is in a raised position before starting. If it should be in a lowered position, so that the blades are coming in contact with the ground, an undue strain is placed on the belt. All Giant-Thatcher reels are interchangeable. When installing a reel, make certain the two flange plates are together and both are on the inside of the main deck. If used in heavy grass, you might find a build-up of grass around the bearings. This should be periodically cleaned off in order that the bearings are not over-loaded. When installing new blades, make certain that all connections are fast before putting your Giant-Thatcher back in action. A bit of care in operation will multiply the blade life considerably.

TRAINING:

1. Regard your Giant-Thatcher as a piece of power equipment and teach this regard to all who will operate this unit.
2. Never allow children or young teenagers to operate the Giant-Thatcher.
3. Be sure you know how to stop the engine at a **MOMENT'S NOTICE**.
4. Instruct children to keep away from the area of operation at all times.

PREPARATION:

1. Before starting operation, clear the entire work area of all debris that could catch on or be thrown by the Giant-Thatcher.
2. Unless there is very good artificial light, use only during daylight.
3. Fill gasoline driven machines outdoors. Avoid spilling gasoline and **DO NOT** fill the engine while it is running or while you are smoking.

OPERATION:

1. NEVER INSERT ANY BODY PART OR OTHER FOREIGN OBJECT IN ANY OPENING WHILE THE MACHINE IS RUNNING.
2. Do not operate with any guards or component parts removed from unit.
3. Before making any adjustments or repairs, stop engine and remove spark plug wire.
4. While in operation, keep all parts of body away from engine base or thatcher reel.
5. When operating machine, keep people and pets a safe distance away.
6. Before starting, be certain to check the engine's OIL AND GASOLINE. (See engine manufacturer's Service Manual.) NEVER check the engine while engine is running or while you are smoking. Check ONLY when engine is cold.

7. Before starting the engine, be certain the unit is completely assembled, and the thatcher blades are clear of the ground. With your right hand, set the throttle control to the "on" position. When the engine is cold, you might have to initially choke the engine. (The choke lever is next to the carburetor.) Next, with your left hand, pull the recoil starter rope slowly until you feel compression, then pull fast and steady. Do not let the recoil starter rope snap back by itself. This may damage the rope or recoil starter assembly. After the engine starts, move the throttle lever down to approximately halfway.

MAINTENANCE AND STORAGE:

1. Follow implicitly the engine manufacturer's recommendations for maintenance and storage.
2. Never adjust the Giant-Thatcher until the engine has been turned off and the spark plug wire has been disconnected.
3. If carburetor adjustment is necessary, stand to one side and keep feet and hands in the clear while making adjustments.
4. Keep engine free from accumulations of grass, leaves or excessive grease. An accumulation of these combustible materials may result in a fire.
5. Store gasoline in a safe and approved container in a cool dry place.
6. Keep the Giant-Thatcher and fuel container in locked storage to prevent children from playing and/or tampering with them.
7. Gasoline powered equipment or fuel containers should not be stored in a basement or any closed area where heating or heat appliances or open pilot lights are present, unless the fuel is completely drained from the power equipment and the fuel containers.

GIANT-VAC WARRANTY

GIANT-VAC MFG. INCORPORATED, here-in-after called Giant-Vac, warrants each new Giant-Vac to the original retail purchaser of the new Giant-Vac equipment to be free from manufacturing defects in normal service for a period of 90 days, unless it is used for rental purposes, which limits the warranty to 30 days. This warranty does not apply to engines, tires or other parts that are purchased and warranted by their manufacturer. Items such as bags, grass catchers, hoses and blades are not warranted, as these are considered expendable items. This warranty does not include equipment failures due to normal wear.

Any obligation under this warranty is expressly limited to the replacement or repair, at an authorized servicing Giant-Vac dealer, or at a point designated by us, of such parts as appear to us to have been defective. All defective parts have to be returned freight prepaid before credit will be issued.

We shall not be liable for transportation charges in connection with the replacement or repair of defective parts.

This warranty does not apply to a Giant-Vac upon which repairs or alterations have been made by others except with our prior written approval.

We shall not be liable for consequential damages or contingent liabilities for the fitness of any Giant-Vac for any particular purpose.

We make no other express, implied or statutory warranty, nor is anyone authorized to make any in our behalf.

GIANT-VAC MFG. INCORPORATED
P.O. BOX 195
SOUTH WINDHAM, CT. 06266
203-423-7741
FAX: 203-423-2654

PARTS LIST NO. 5713

<u>REF.</u> <u>NO.</u>	<u>PART</u> <u>NO.</u>	<u>DESCRIPTION</u>	<u>51GT</u>	<u>81GT</u>
1	10025	Engine deck	1	
1	10026	Engine deck		1
2	33036	Height adjustment frame	1	1
3	23032	Bumper bar	1	1
8	36130	Large pulley	1	1
9	36131	Small pulley	1	1
10	36132	Belt	1	
10	36133	Belt		1
11	37005	Belt guard	1	
11	37006	Belt guard		1
12	24518	Steel rear guard apron	1	1
13	35001	Throttle control	1	1
14	23019	Lower handle right	1	1
14-A	23020	Lower handle left	1	1
15	23018	Upper handle	1	1
15-A	31590	Foam handle grip	1	1
16	31090	"U" type holder	1	1
17	23028	Upper adjustment arm	1	1
17-A	31104	Rubber handle grip	1	1
18	23031	Lower adjustment arm	1	1
19	33010	8" wheels	4	4
20	31083	1/2 x 3" hex axle bolt	4	4
21	31022	1/2" hex nut	11	11
22	31093	1/2 x 1" hex bolt	1	1
23	31085	1/2" collars	2	2
24	31086	1/2 x 1 3/4" hex bolt	2	2
25	31087	5/16 x 3/4" hex bolt	2	2
26	31003	5/16" lock washer	18	18
27	31004	5/16" hex nut	14	14
28	31002	5/16 x 1 3/4" hex bolt	10	10
29	31088	5/16 x 3" hex bolt	3	3
30	31089	3/8 x 1" hex bolt	4	4
31	31008	3/8" lock washer	2	2
32	31009	3/8" hex nut	3	3
34	31010	10-24 x 1 1/4" round head screw, lock washer and hex nut	2	2
38	31098	1/4" lock nut	1	1
41	31046	5/16 x 3/4" carriage bolt	6	6
44	36138	Flange for bearing	4	4
45	36139	Bearing	2	2
46	31007	Throttle clip	2	2

<u>REF.</u> <u>NO.</u>	<u>PART</u> <u>NO.</u>	<u>DESCRIPTION</u>	<u>51GT</u>
---------------------------	---------------------------	--------------------	-------------

ITEMS NOT SHOWN

	10027	Engine base	1
	10028	Engine base	
	39001	5 H.P. B&S engine	1
	39034	5 H.P. B&S I/C engine (option)	1
	39002	8 H.P. B&S engine	
	39035	8 H.P. B&S I/C engine (option)	

THATCHER REEL

1	31108	1" hex nut	2
2	36035	Main shaft - solid blade	1
3	31107	Woodruff key	1
4	36037	Spacer solid blade	24
5	36042	Straight blade*	12
6	36043	Offset blade**	12
7	36036	Main shaft - flail blade	1
8	31107	Woodruff key	1
9	31106	1/8" roll pins	12
10	36038	3/8" rubber spacer	12
11	36039	7/8" rubber spacer	30
12	36041	Flail blade	36
13	36040	Flail blade shaft	6

* WHEN ORDERING PLEASE SPECIFY

36042	1/32 straight (32-S)
36044	1/16 straight (16-S)
36046	1/8 straight (8-S)

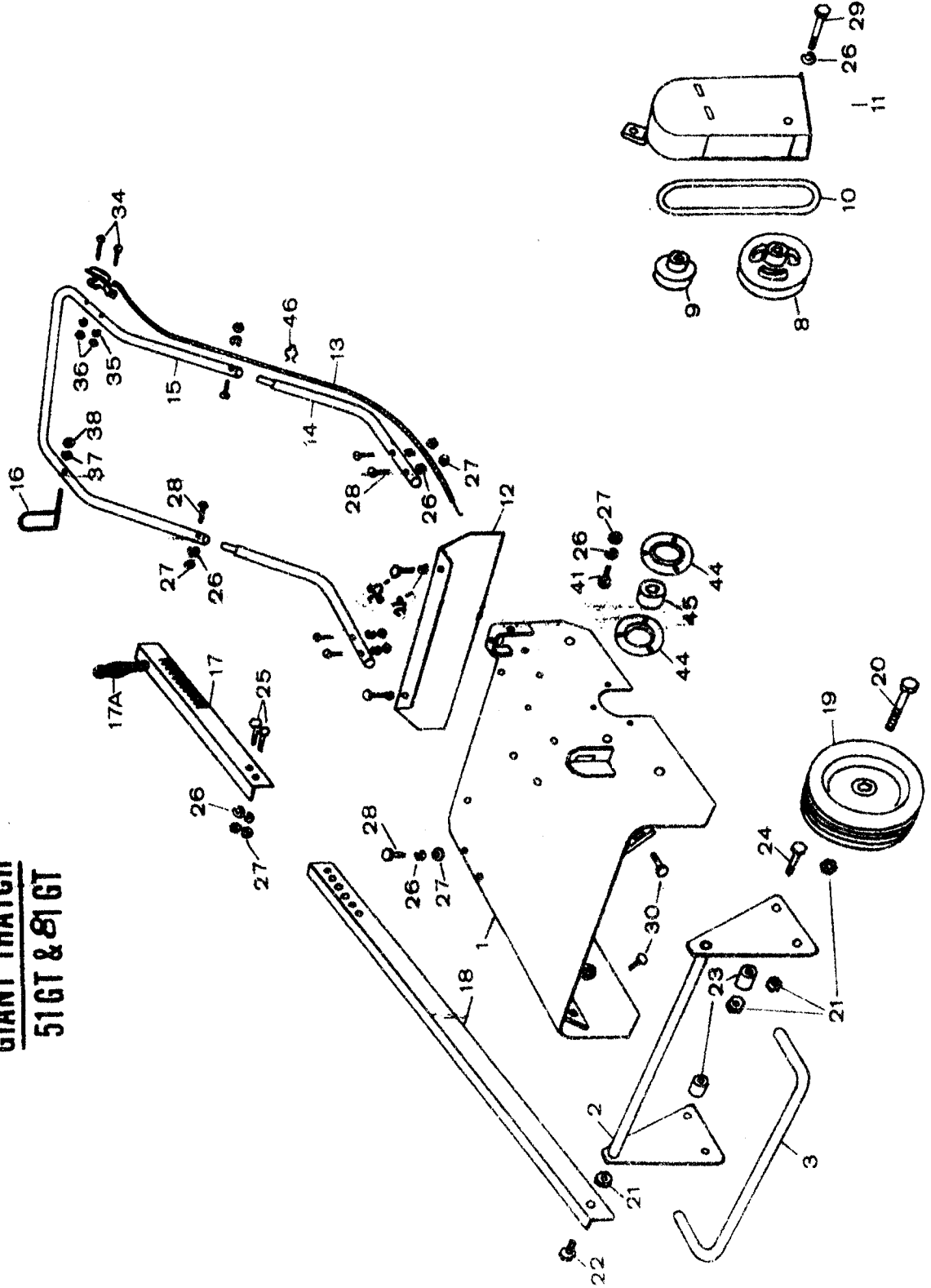
**WHEN ORDERING PLEASE SPECIFY

36043	1/32 offset (32-O)
36045	1/16 offset (16-O)
36047	1/8 offset (8-O)

NOTE: IF 24 BLADES ARE REQUIRED FOR SOLID REELS PLEASE SPECIFY WHEN ORDERING.

ALL SPECIFICATIONS SUBJECT TO CHANGE WITHOUT NOTICE

THATCHER PARTS LIST
GIANT THATCH
51GT & 81GT



GIANT THATCH REELS

