

---

**THE GIANT-VAC**

# ***GIANT THATCHER***

**MODELS 55GT – 55GTH – 91GT**

---

**ASSEMBLY GUIDE AND OPERATOR'S MANUAL**

---

As you unpack your Giant-Thatcher power unit, you will find the following parts:

- 1 - Power unit with motor, thatcher reel and wheels mounted
- 1 - Set of handles in three parts
- 1 - Height adjustment lever assembly
- 1 - Package of hardware

Inspect parts for any damage that may have occurred in shipping. If any are found, save the packing box and **IMMEDIATELY** notify the transport carrier who delivered your machine, as they are responsible for the damage, and are the only ones to make any adjustments. Before leaving our plant, all dimensions are held to close tolerances, and thus, you will have little difficulty in assembling your Giant-Thatcher if you follow these steps.

---

**CALIFORNIA PROPOSITION 65 WARNING**

**Gasoline and Diesel engine exhaust and some of its constituents are known to the State of California to cause cancer, birth defects, and other reproductive harm.**

**As an owner of off-road gasoline or diesel engine equipment and/or as an employer, you also may have an obligation under the California Occupational Safety and Health Act or under Proposition 65 to warn persons exposed to gas and diesel engine exhaust and /or other Proposition 65 chemicals in and around your workplace. See California Health and Safety Code section 25249.5, Title 22 of the California Code of Regulations at section 1200, *er seq.*, and Title 8 of the California Code of Regulations section 5194.**

---

## **ASSEMBLY INSTRUCTIONS**

**Note: please refer to parts list for correct parts identification and placement**

### **HANDLE AND THROTTLE ASSEMBLY:**

- Insert lower handles (Parts List ref. #7,8) into upper handle (#12) until bolt holes are aligned. (Note that lower holes in lower handles are set at a 45 degree angle; make sure hole angle in each lower handle matches corresponding holes in deck.) Fasten left lower-upper junction with one 5/16 x 1-3/4" hex bolt (#14), securing with lock washer and nut (#15,16). Fasten right side with one 5/16 x 3-1/4" eye bolt (#18), fitted with one 5/16" nut (#19) threaded about 3/4 way up the stud, securing with lockwasher and nut (#20,21). Do not tighten these bolts yet. Fasten handle assembly to engine deck with four 5/16 x 1-3/4" hex bolts, lock washers and nuts (#9-11). Tighten all bolts except eye bolt.
- Fasten throttle control (#51) to left side of upper handle with two 10-24 x 1 1/4" bolts, lock washers and nuts (#52). Secure cable to handle assembly with two throttle clips (#53), one about two inches below the junction of upper and lower handles, the second just below the curve in the upper handle. Make sure you have left a generous loop between the engine and the bottom clip. **THIS IS IMPORTANT** to prevent the throttle binding. After starting your engine, adjust the length of cable by loosening the screw at the throttle lever for proper engine operation.

### **HEIGHT ADJUSTMENT LEVER ASSEMBLY/INSTALLATION:**

- Slip one 1/2" locking collar (#22) onto threaded end of height adjustment handle crank rod (#17a), sliding both about 1" past upper end of thread. Slide end of rod through eye bolt, then slip second collar up against eye bolt. Do not tighten collars yet. Next, fit 1/2-13 wing nut (#23), wings first, onto end of crank rod, threading up to end of thread. Fit 1/2" jam nut (#17c) onto threaded end of lower connecting rod (#17d), threading it down about halfway. Thread one end of adjustment handle main tube (#17b) down to meet jam nut. Tighten jam nut against main tube. Slip angled end of lower connecting rod into hole in right side plate of height adjustment frame (#24), securing with bridge pin (#25). Thread end of crank rod about 1 – 1-1/2" into upper end of main tube. Adjust crank rod placement on eye bolt so that bar of height adjustment frame butts against bumper bar. Slip both upper and lower sets of collars/washers against eye bolt and tighten collars with allen wrench. Thread wing nut against main tube. Tighten nuts securing eye bolt to handle assembly.

**Assembly of your Giant-Vac Thatcher is now complete.**

## **SAFETY AND OPERATING INSTRUCTIONS**

### **MOTOR INSTRUCTIONS:**

You have received a complete engine manual with your machine. Be sure to especially note the instructions on OILING. ALL MACHINES ARE SHIPPED WITHOUT OIL OR GASOLINE UNLESS OTHERWISE NOTED. If you have any difficulties with the engine, check the Yellow Pages of your phone book for the engine dealer nearest you, rather than us, as the engines are under their own manufacturer's warranty.

### **STARTING INSTRUCTIONS:**

Before starting the engine, make certain that the deck is raised to clear the thatching blades of the ground. This is done by turning the crank rod on the height adjustment lever counterclockwise until the height adjustment frame bar butts against the bumper bar. Sock the wing nut tight against the main tube. **CHECK TO BE CERTAIN THE THATCHER BLADES ARE CLEAR OF THE GROUND.** **NOTE: WHEN THE ENGINE IS RUNNING, THE BLADES ARE ROTATING.** (This unit is direct drive.) Never start the engine until you are ready to thatch. Place the throttle control in middle

position, pull out the choke and start the engine. Loosen the height adjustment wing nut, then turn the height adjustment crank rod clockwise just until the blades begin cutting the soil. Unless recommended by a turf specialist, you should not thatch too deep. Push the machine in a straight line. At the end of a path, raise the thatching reel by turning the crank rod counterclockwise as before. Turn the machine around and follow back along the previously thatched path. We definitely recommend this back and forth pattern rather than a square pattern as a more uniform thatching job will result. Make certain your Giant-Thatcher is in a raised position before you stop the unit.

### **CLEAN-UP:**

After thatching, the lawn should be thoroughly cleaned to be certain all of the waste is removed. We strongly recommend a Giant-Vac for this operation. A Giant-Vac will pick up all of this debris and not push any of the dead thatch back into the soil.

### **GENERAL MAINTENANCE:**

Your Giant-Thatcher has been carefully engineered to give you excellent service. The following are a few thoughts to keep your maintenance to a minimum. Make certain your Giant-Thatcher is in a raised position before starting. If it should be in a lowered position, so that the blades are coming in contact with the ground, an undue strain is placed on the belt. When installing a new reel, make certain the two flange plates are together and both are on the inside of the main deck. If used in heavy grass, you might find a build-up of grass around the bearings. This should be periodically cleaned off in order that the bearings are not over-loaded. When installing new blades, make certain that all connections are fast before putting your Giant-Thatcher back in action. A bit of care in operation will multiply the blade life considerably.

### **TRAINING:**

1. Regard your Giant-Thatcher as a piece of power equipment and teach this regard to all who will operate this unit.
2. Never allow children or young teenagers to operate the Giant-Thatcher.
3. Be sure you know how to stop the engine at a **MOMENT'S NOTICE**.
4. Instruct children to keep away from the area of operation at all times.

### **PREPARATION:**

1. Before starting operation, clear the entire work area of all debris that could catch on or be thrown by the Giant-Thatcher.
2. Unless there is very good artificial light, use only during daylight.
3. Fill gasoline driven machines outdoors. Avoid spilling gasoline and DO NOT fill the engine while it is running or while you are smoking.

### **OPERATION:**

1. NEVER INSERT ANY BODY PART OR OTHER FOREIGN OBJECT IN ANY OPENING WHILE THE MACHINE IS RUNNING.
2. Do not operate with any guards or component parts removed from unit.
3. Before making any adjustments or repairs, stop engine and remove spark plug wire.

4. While in operation, keep all parts of body away from engine base or thatcher reel.
5. When operating machine, keep people and pets a safe distance away.
6. Before starting, be certain to check the engine's OIL AND GASOLINE. (See engine manufacturer's Service Manual.) NEVER check the engine while engine is running or while you are smoking. Check ONLY when engine is cold.
7. Before starting the engine, be certain the unit is completely assembled, and the thatcher blades are clear of the ground. With your right hand, set the throttle control to the "on" position. When the engine is cold, you might have to initially choke the engine. (The choke lever is next to the carburetor.) Next, with your left hand, pull the recoil starter rope slowly until you feel compression, then pull fast and steady. Do not let the recoil starter rope snap back by itself. This may damage the rope or recoil starter assembly. After the engine starts, move the throttle lever down to approximately halfway.

### **MAINTENANCE AND STORAGE:**

1. Follow implicitly the engine manufacturer's recommendations for maintenance and storage.
2. Never adjust the Giant-Thatcher until the engine has been turned off and the spark plug wire has been disconnected.
3. If carburetor adjustment is necessary, stand to one side and keep feet and hands in the clear while making adjustments.
4. Keep engine free from accumulations of grass, leaves or excessive grease. An accumulation of these combustible materials may result in a fire.
5. Store gasoline in a safe and approved container in a cool dry place.
6. Keep the Giant-Thatcher and fuel container in locked storage to prevent children from playing and/or tampering with them.
7. Gasoline powered equipment or fuel containers should not be stored in a basement or any closed area where heating or heat appliances or open pilot lights are present, unless the fuel is completely drained from the power equipment and the fuel containers.

---

# **GIANT-VAC WARRANTY**

---

**GIANT-VAC, INC.**, here-in-after called Giant-Vac, warrants each new Giant-Vac to the original retail purchaser of the new Giant-Vac equipment to be free from manufacturing defects in normal service for a period of 1 year, unless it is used for rental purposes, which limits the warranty to 30 days. This warranty does not apply to engines, tires or other parts that are purchased and warranted by their manufacturer. Items such as bags, grass catchers, hoses and blades are not warranted, as these are considered expendable items. This warranty does not include equipment failures due to normal wear.

Any obligation under this warranty is expressly limited to the replacement or repair, at an authorized servicing Giant-Vac dealer, or at a point designated by us, of such parts as appear to us to have been defective. All defective parts have to be returned freight prepaid before credit will be issued.

We shall not be liable for transportation charges in connection with the replacement or repair of defective parts.

This warranty does not apply to a Giant-Vac upon which repairs or alterations have been made by others except with our prior written approval.

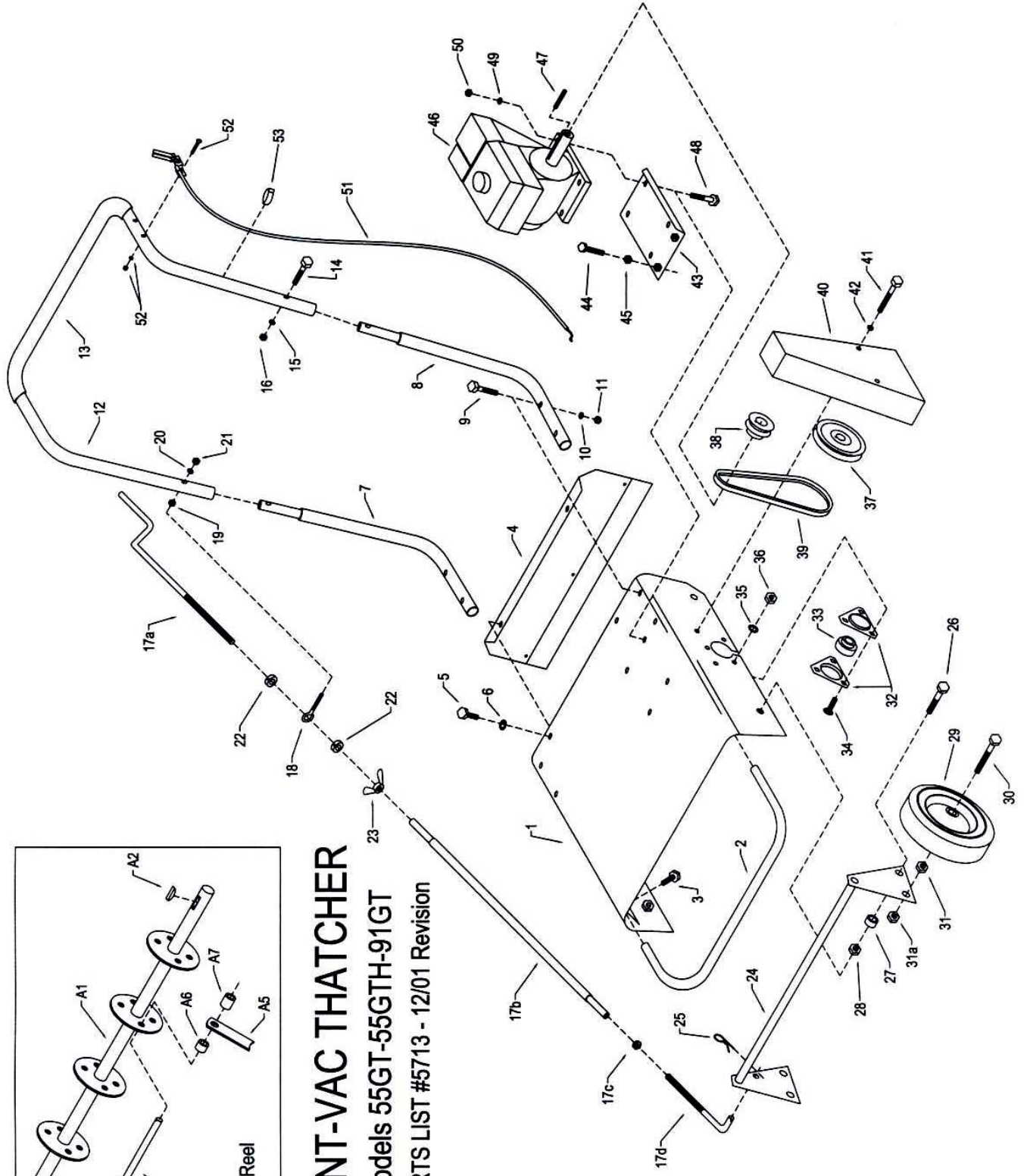
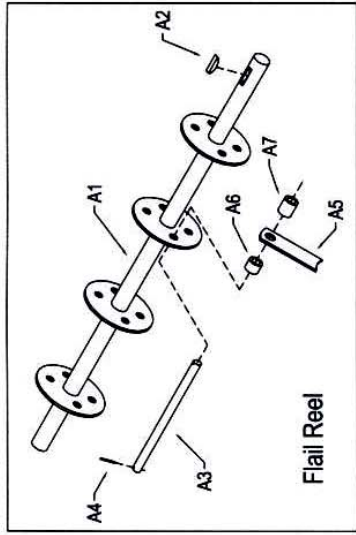
We shall not be liable for consequential damages or contingent liabilities for the fitness of any Giant-Vac for any particular purpose.

We make no other express, implied or statutory warranty, nor is anyone authorized to make any in our behalf.

---

**GIANT-VAC, INC.  
P.O. BOX 195  
SOUTH WINDHAM, CT. 06266  
PHONE: 860-423-7741 • FAX: 860-423-2654**

---



# GIANT-VAC THATCHER

Models 55GT-55GTH-91GT

PARTS LIST #5713 - 12/01 Revision

**PARTS LIST NO. 5713 – 12/01 Revision****55GT/55GTH/91GT THATCHER**

<u>REF. NO.</u>	<u>PART NO.</u>	<u>DESCRIPTION</u>	<u>55GT</u>	<u>55GTH</u>	<u>91GT</u>
1	10025	Engine deck	1	1	--
1	10026	Engine deck	--	--	1
2	23032	Bumper bar	1	1	1
3	31089	3/8 x 1" hex bolt	2	2	2
4	24518	Steel rear guard apron	1	1	1
4a	27306	Rear rubber flap	1	1	1
4b	27307	Steep rivet strip for rubber flap	1	1	1
4c	31100	3/16" steel rivet	3	3	3
5	31087	5/16 x 3/4" hex bolt	2	2	2
6	31003	5/16" lock washer	2	2	2
7	23019	Lower handle right	1	1	1
8	23020	Lower handle left	1	1	1
9	31002	5/16 x 1-3/4" hex bolt	4	4	4
10	31003	5/16" lock washer	4	4	4
11	31004	5/16" hex nut	4	4	4
12	23018	Upper handle	1	1	1
13	31590	Foam handle grip	1	1	1
14	31002	5/16 x 1-3/4" hex bolt	1	1	1
15	31003	5/16" lock washer	1	1	1
16	31004	5/16" hex nut	1	1	1
17	23258	Height adjustment handle assembly (4 parts*)	1	1	1
17a	---- *	Crank rod	--	--	--
17b	---- *	Main tube	--	--	--
17c	---- *	1/2" jam nut	--	--	--
17d	---- *	Lower connecting rod	--	--	--
18	31618	5/16 x 3-1/4" eye bolt	1	1	1
19	31004	5/16" hex nut	1	1	1
20	31003	5/16" lock washer	1	1	1
21	31004	5/16" hex nut	1	1	1
22	31085	1/2" locking collar	2	2	2
23	31787	1/2-13 wing nut	1	1	1
24	33230	Height adjustment frame	1	1	1
25	31126	Bridge pin	1	1	1
26	31086	1/2 x 1-3/4" hex bolt	2	2	2
27	31815	1/2" spacer	2	2	2
28	31012	1/2" hex jam nut	2	2	2
29	33010	8 x 1.75 wheel	4	4	4
30	31461	1/2 x 2-1/2" hex bolt	4	4	4
31	31022	1/2" hex nut	4	4	4
31a	31476	1/2" lock nut	3	3	3
31b	31043	1/2" flat washer (right rear wheel only—not shown)	2	2	2
32	36138	Flange for bearing	4	4	4
33	36139	Bearing	2	2	2
34	31046	5/16 x 3/4" carriage bolt	6	6	6
35	31003	5/16" lock washer	6	6	6
36	31004	5/16" hex nut	6	6	6
37	36130	Large pulley	1	1	1

<u>REF. NO.</u>	<u>PART NO.</u>	<u>DESCRIPTION</u>	<u>55GT</u>	<u>55GTH</u>	<u>91GT</u>
38	36131	Small pulley – 1" bore	1	--	--
38	36287	Small pulley – 3/4" bore	--	1	--
38	36288	Small pulley – 1-1/8" bore	--	--	1
39	36132	Belt	1	1	1
40	37005	Belt guard	1	1	1
41	31088	5/16 x 3" hex bolt	2	2	2
42	31003	5/16" lock washer	2	2	2
43	10027	Engine base	1	1	--
43	10028	Engine base	--	--	1
44	31816	3/8-16 x 2" full thread bolt (belt tension)	2	2	2
45	31009	3/8-16 hex nut	2	2	2
46	39077	5.5 HP B&S Intek engine	1	--	--
46	39095	5.5 HP Honda engine	--	1	--
46	39094	9 HP B&S Intek engine	--	--	1
47	31795	1/4 x 2-1/8" shaft key	1	--	1
47	31868	3/16" x 2" shaft key	--	1	--
48	31002	5/16 x 1-3/4" hex bolt (rear engine mounting)	2	2	2
48	31623	5/16 X 2-1/2" hex bolt (front engine mounting)	2	2	2
49	31003	5/16" lock washer	4	4	4
50	31004	5/16" hex nut	4	4	4
51	35011	Throttle control	1	1	1
52	31010	10-24 x 1-1/4" round head screw, lockwasher, nut	2	2	2
53	31007	Throttle clip	2	2	2

**FLAIL REEL**

A1	36036	Main flail shaft	1	1	1
A2	31107	Woodruff key	1	1	1
A3	36040	Flail blade shaft	6	6	6
A4	31106	1/8" roll pins	12	12	12
A5	36041	Flail blade	36	36	36
A6	36038	3/8" rubber spacer	12	12	12
A7	36039	7/8" rubber spacer	30	30	30

**ALL SPECIFICATIONS SUBJECT TO CHANGE WITHOUT NOTICE**