

INSTRUCTIONS FOR ASSEMBLING AND OPERATING YOUR GIANT-VAC
MOWER RIDING SULKY
MODEL 1202

Congratulations! You have just purchased one of the finest outdoor power equipment accessories on the market today. Your Giant-Vac Mower Riding Sulky should provide years of trouble-free service if properly maintained.

Inspect parts for any damage that may have occurred during shipping. If any are found, save packing box and notify carrier IMMEDIATELY, as they are responsible for the damage and are the only ones to make any adjustments.

ASSEMBLY:

1. Turn Chassis & Axle Assembly (Parts List Ref. #1) upside down, so that the seat brackets are on the ground and the axle is on top. Remove one of the two collars (#7) from each axle. Slide wheel (#6) onto axle, then replace collar. (Note: Valve stem and grease fitting should face outward.) Adjust outer collar so that it is flush with end of axle, then tighten. Slide wheel against outer collar, then slide inner collar against wheel and tighten. Wheel should fit snug between collars, yet spin freely.
2. Remove one of the two collars from drawbar (#12), then slide drawbar shaft through shaft boss on bottom of chassis. (Note: Be sure open end of chassis faces toward front end of drawbar. Refer to Parts List Reference Drawing.) Slide second collar onto shaft. Adjust so that end of shaft protrudes from shaft boss approximately 2". Slide collars against each end of shaft boss and tighten. Install 1/4 x 2-1/4 hex bolt (#9) through hole in end of drawbar shaft. Secure with 1/4" lockwasher (#10) and 1/4" hex nut (#11). This is a safety feature implemented in the event that the collars should inadvertently loosen during operation.
3. Remove nuts (#17), lockwashers (#16), and Lower Bolt Plate (#15) from footrest assembly. Securing bolts (#14) with fingers, hold Footrest (#13) up under drawbar about 2" from angle junction on drawbar. (Note: Drawbar should be upside down, with angle junction pointed downward.) Slide bolt plate onto bolts, securing assembly with lockwashers and nuts.
4. Turn unit right side up. Fasten Seat (#2) onto chassis with four 5/16 x 3/4 hex bolts (#3), 5/16 lockwashers (#4), and 5/16 flatwashers (#5). Be sure to center seat using slotted holes in chassis.
5. Fasten Mower Connecting Bracket (#21) to mower chassis by aligning holes in bracket with holes in rear of mower chassis (these are located on the reinforcement bar directly behind the transmission.) Fasten with two 3/8 x 1 hex bolts (#24), 3/8 lockwashers (#25), and 3/8 hex nuts (#26).

6. Connect sulky to mower by sliding Drawbar Swivel Joint (#20; this should already be attached to the drawbar upon receipt) into mower connecting bracket, and securing with Connecting Pin (#22). Install Lynch Pin (#23) through hole in end of connecting pin and snap closed.

7. Make any necessary adjustments to provide the most comfortable riding position. Adjust mower handle reach by loosening collars securing drawbar, and sliding chassis toward or away from mower. Be sure to reposition collars and tighten securely. (At this point, you may desire to adjust the height of the mower handlebar. Please refer to your Giant-Mow Instruction Manual for information regarding this.) Adjust footrest by loosening nuts, and sliding footrest assembly toward or away from chassis along drawbar until desired distance has been achieved. Retighten nuts.

8. Grease all fittings. This includes wheels, drawbar shaft boss, and drawbar swivel joint (2 places).

Your Giant-Vac Mower Sulky is now ready for use. Please refer to your Giant-Mow Instruction Manual for complete information regarding the correct operation of your mower unit.

IMPORTANT NOTE: THIS SULKY UNIT IS INTENDED FOR USE ONLY ON GIANT-VAC EQUIPMENT.

ALWAYS REMEMBER: SAFETY FIRST!

Because this accessory is intended for use in conjunction with outdoor power equipment, it is to be considered a piece of power equipment itself. Be sure anyone operating it has been properly trained to do so. It is not a toy.

SOME IMPORTANT DO'S AND DON'TS FOR SAFE OPERATION:

DO make sure all bolts, nuts, collars, etc., are tightened securely. Loose fasteners can result in serious injury.

DO make sure connecting pin is properly secured with lynch pin. Also make sure lynch pin is properly snapped shut. Failure to do so can result in sulky disengaging from mower.

DO keep feet solidly on the footrest at all times during operation. Allowing them to dangle freely can result in serious injury.

DO NOT allow riders on the sulky. It is designed for one-person operation only.

DO NOT use sulky on hills, inclines, or slopes. It is intended for use only on flat, level ground.

Refer to your Giant-Mow Instruction Manual for further safety rules for operating outdoor power equipment.

GIANT-VAC WARRANTY

GIANT-VAC, INC., here-in-after called Giant-Vac, warrants each new Giant-Vac to the original retail purchaser of the new Giant-Vac equipment to be free from manufacturing defects in normal service for a period of one (1) year. This warranty does not apply to engines, tires or other parts that are purchased and warranted by their manufacturer. Items such as hoses and blades are not warranted, as these are considered expendable items. This warranty does not include equipment failures due to normal wear.

Any obligation under this warranty is expressly limited to the replacement or repair, at an authorized servicing Giant-Vac dealer, or at a point designated by us, of such parts as appear to us to have been defective. All defective parts have to be returned freight prepaid before credit will be issued.

We shall not be liable for transportation charges in connection with the replacement or repair of defective parts.

This warranty does not apply to a Giant-Vac upon which repairs or alterations have been made by others except with our prior written approval.

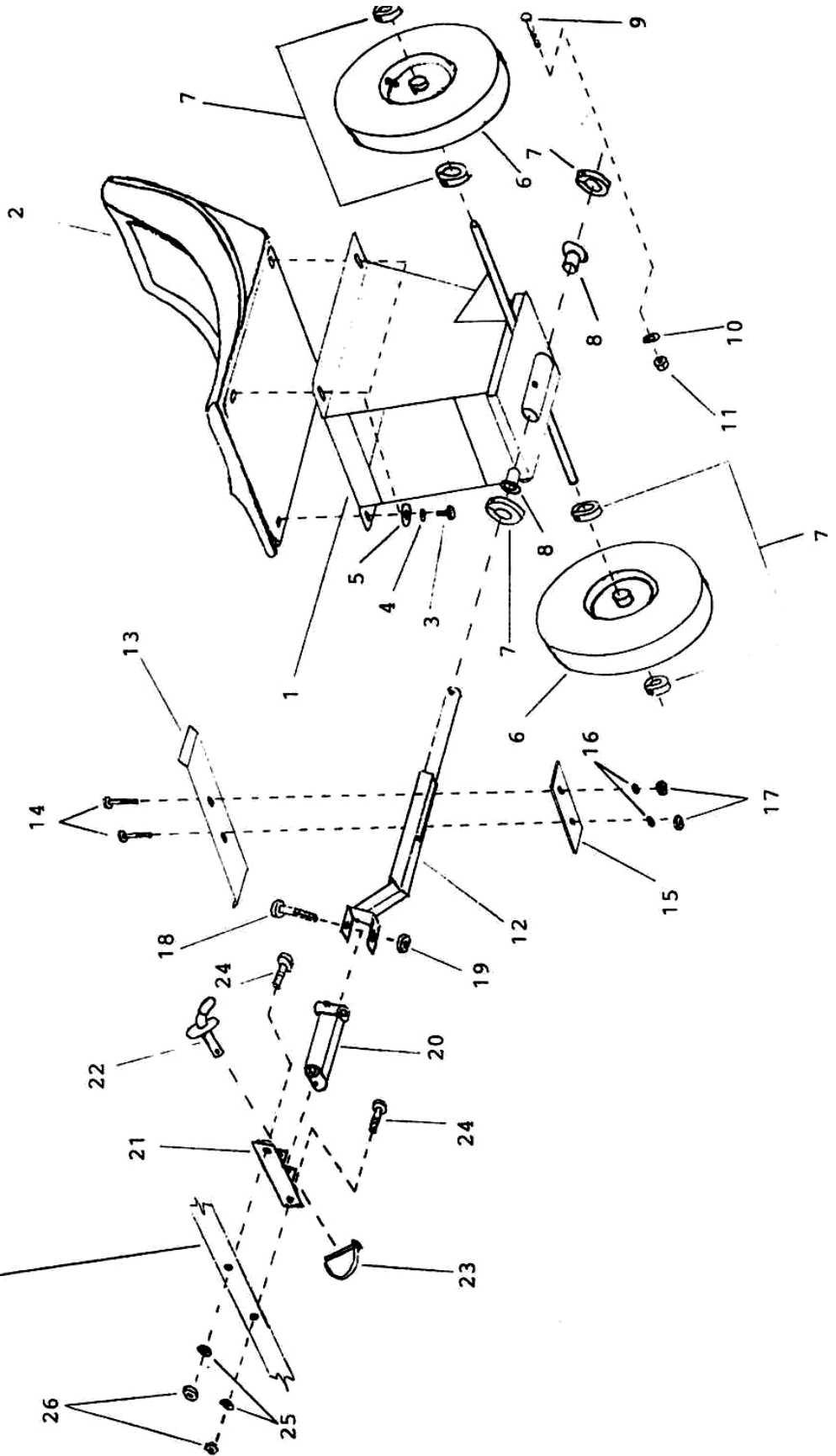
We shall not be liable for consequential damages or contingent liabilities for the fitness of any Giant-Vac for any particular purpose.

We make no other express, implied or statutory warranty, nor is anyone authorized to make any in our behalf.

Giant-Vac, Inc.
P.O. Box 195
South Windham, CT. 06266
Phone: 860-423-7741 Fax: 860-423-2654

PARTS LIST # 5786

MOWER CHASSIS



PARTS LIST # 5786**1202 MOWER RIDING SULKY**

REF NO.	PART NO.	DESCRIPTION	QTY
1	27267	Chassis & Axle Assembly	1
2	37094	Seat	1
3	31400	5/16 x 3/4 Hex Bolt	4
4	31003	5/16 Lockwasher	4
5	31027	5/16 Flatwasher	4
6	33181	4.10 - 6NHS Tire & wheel w/1" roller bearing	2
7	31583	1" ID Split Collar	6
8	31306	1" ID Flange Bushing	2
9	31011	1/4 x 2-1/4 Hex Bolt	1
10	31013	1/4 Lockwasher	1
11	31030	1/4 Hex Nut	1
12	38032	Draw Bar	1
13	37112	Foot Rest	1
14	31631	5/16 x 2-1/4 Hex Bolt	2
15	37113	Foot Rest Lower Bolt Plate	1
16	31003	5/16 Lockwasher	2
17	31004	5/16 Hex Nut	2
18	31461	1/2 x 2-1/2 Hex Bolt	1
19	31406	1/2 Lock Nut	1
20	38033	Draw Bar Swivel Joint	1
21	37111	Mower Connecting Bracket	1
22	31632	Connecting Pin	1
23	31305	Lynch Pin	1
24	31389	3/8 x 1 Hex Bolt	2
25	31008	3/8 Lockwasher	2
26	31009	3/8 Hex Nut	2

SPECIFICATIONS SUBJECT TO CHANGE WITHOUT NOTICE