
THE GIANT-VAC
SELF-CONTAINED GRASS CATCHER
MODEL 1102-AL

OPERATOR'S MANUAL

Congratulations! You have just purchased one of the finest outdoor power equipment accessories on the market today. Your Giant-Vac Grass Catcher should provide years of trouble-free service if properly maintained.

Inspect parts for any damage that may have occurred during shipping. If any are found, save packing box and notify carrier **IMMEDIATELY**, as they are responsible for the damage and are the only ones to make any adjustments.

ASSEMBLY AND MOUNTING

(Refer to Parts List for correct part identification, as well as correct placement of parts)

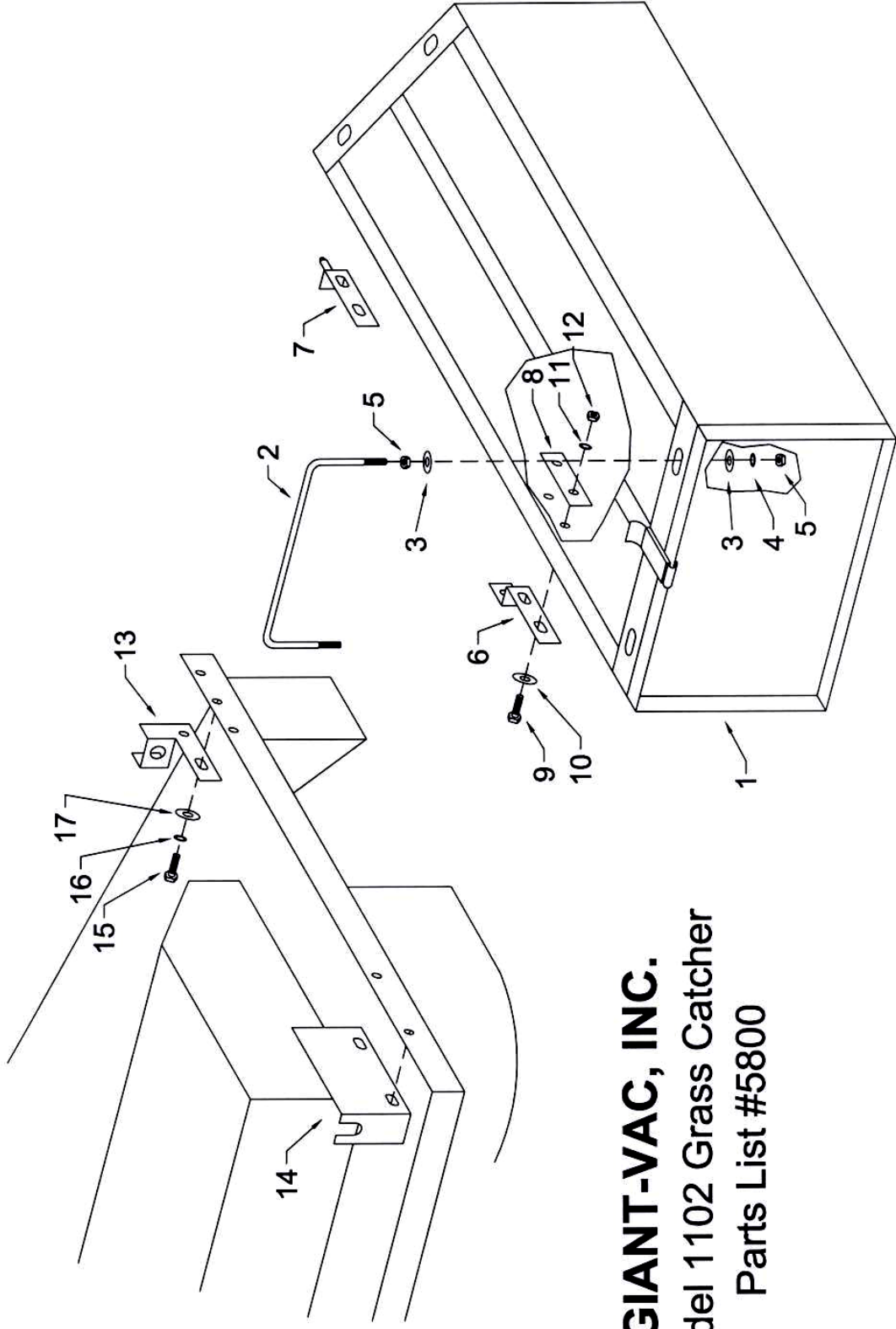
- Remove mower discharge deflector. (Helpful hint: After removing deflector from mower, replace hardware onto mounting brackets on deflector and store in a convenient place for future use.) **Do not discard deflector. It is an important safety feature. See warning below.**
- Thread one 5/16 nut (#5) onto each end of both Catcher Carrying Handles (#2), followed by one 5/16 flatwasher (#3). Next, drop handles into corresponding holes in top ends of Catcher Body (#1), securing with second flatwasher, lockwasher (#4) and nut (#5). Tighten securely.
- Attach Catcher Receiving Brackets (Parts List Ref. #13,14) to attaching bracket on mower (See Parts List for correct placement) using four 3/8 x 3/4" bolts (#15), lockwashers (#16) and flatwashers (#17).
- With door of catcher facing rear of mower, lift catcher by handles, tilting top of body toward mower, and insert pin on Front Pivot Pin Bracket (#7) into front hanger hole on front receiving bracket on mower. Next, hook slot in Rear Slot Bracket (#6) into rear hanger slot on receiving bracket, making sure bracket drops fully into rear locking portion of slot. Now lower bottom of catcher body into resting position against bottom of receiving bracket. Note: Pin on front pin bracket should fit fully into hole in front pin receiver bracket on mower. If this is not the case, loosen brackets and adjust accordingly.

Assembly and installation of your Giant-Vac Grass Catcher is now complete.

Please refer to your Giant-Mow operator's manual for safe and effective mowing.

! DANGER !

ATTEMPTING TO OPERATE MOWER WITHOUT CATCHER BODY IN PLACE CAN RESULT IN SERIOUS INJURY. IN SITUATIONS WHERE CATCHER USE IS NOT CONVENIENT OR PREFERRED, REMOVE ENTIRE ASSEMBLY AND RE-ATTACH MOWER DISCHARGE DEFLECTOR.



GIANT-VAC, INC.
 Model 1102 Grass Catcher
 Parts List #5800

PARTS LIST # 5800**GIANT-VAC GRASS CATCHER MODEL 1102-AL**

REF NO.	PART NO.	DESCRIPTION	QTY
1	27381	Catcher box assembly (box, door & door snap latch)	1
2	23254	Carry handle	2
3	31027	5/16 flat washer	8
4	31003	5/16 lock washer	4
5	31004	5/16-18 hex nut	8
6	27383	Rear slot bracket – catcher side	1
7	27382	Front pin bracket – catcher side	1
8	27294	Rear slot bracket reinforcement plate	1
8a	27386	Front pin bracket reinforcement plate (not shown)	1
9	31031	5/16-18 x 3/4" hex bolt	4
10	31027	5/16 flat washer	4
11	31003	5/16 lock washer	4
12	31004	5/16-18 hex nut	4
13	27384	Front pin receiver bracket – mower side	1
14	27385	Rear slot receiver bracket – mower side	1
15	31492	3/8-16 x 3/4" hex bolt	4
16	31008	3/8 lock washer	4
17	31034	3/8 flatwasher	4
	27240	Bracket set - complete	1

SPECIFICATIONS SUBJECT TO CHANGE WITHOUT NOTICE

GIANT-VAC WARRANTY

GIANT-VAC, INC., here-in-after called Giant-Vac, warrants each new Giant-Vac to the original retail purchaser of the new Giant-Vac equipment to be free from manufacturing defects in normal service for a period of 1 year, unless it is used for rental purposes, which limits the warranty to 30 days. This warranty does not apply to engines, tires or other parts that are purchased and warranted by their manufacturer. Items such as bags, grass catchers, hoses and blades are not warranted, as these are considered expendable items. This warranty does not include equipment failures due to normal wear.

Any obligation under this warranty is expressly limited to the replacement or repair, at an authorized servicing Giant-Vac dealer, or at a point designated by us, of such parts as appear to us to have been defective. All defective parts have to be returned freight prepaid before credit will be issued.

We shall not be liable for transportation charges in connection with the replacement or repair of defective parts.

This warranty does not apply to a Giant-Vac upon which repairs or alterations have been made by others except with our prior written approval.

We shall not be liable for consequential damages or contingent liabilities for the fitness of any Giant-Vac for any particular purpose.

We make no other express, implied or statutory warranty, nor is anyone authorized to make any in our behalf.

**GIANT-VAC, INC.
P.O. BOX 195
SOUTH WINDHAM, CT. 06266
PHONE: 860-423-7741 • FAX: 860-423-2654**
